



## 90 Turriell Point Road LILLI PILLI NSW

5 3 2

One of the finest homes in the area, this near new, faultlessly presented home will not only meet but surely exceed the most ambitious expectations of the modern family. With an emphasis on space, the expansive multiple living areas interconnect to the modern gourmet kitchen with European appliances offering gas cooking and a double oven.

Ideally configured for easy family living, it accommodates 5 bedrooms with built in robes, 2 bathrooms, a master ensuite with spa and a spacious study. This impressive family home also comes with an expansive outdoor entertaining area complete with a heated pool and spa set amongst professionally landscaped grounds as well as enjoying bay views.

**Price** : \$ 1,680,000

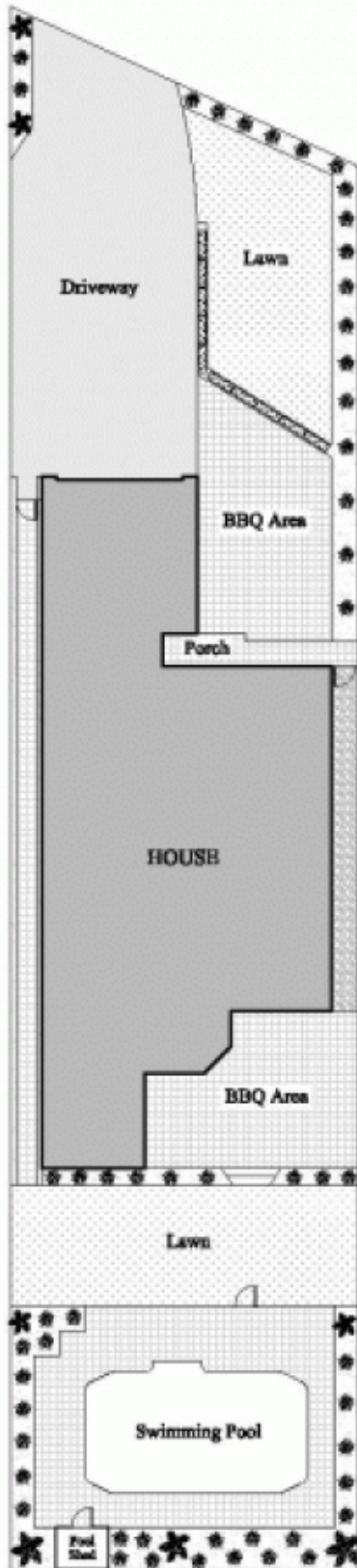
**View** : <https://www.gibsonpartners.com/sale/nsw/sutherland/lilli-pilli/residential/house/5852853>



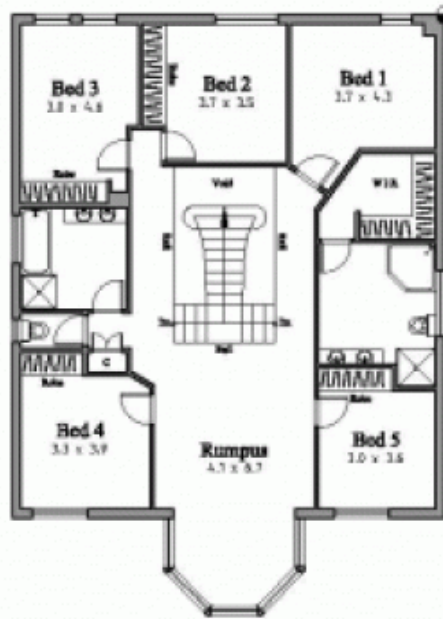
**Ivan Lampret**  
02 9523 1333

# Lilli Pili

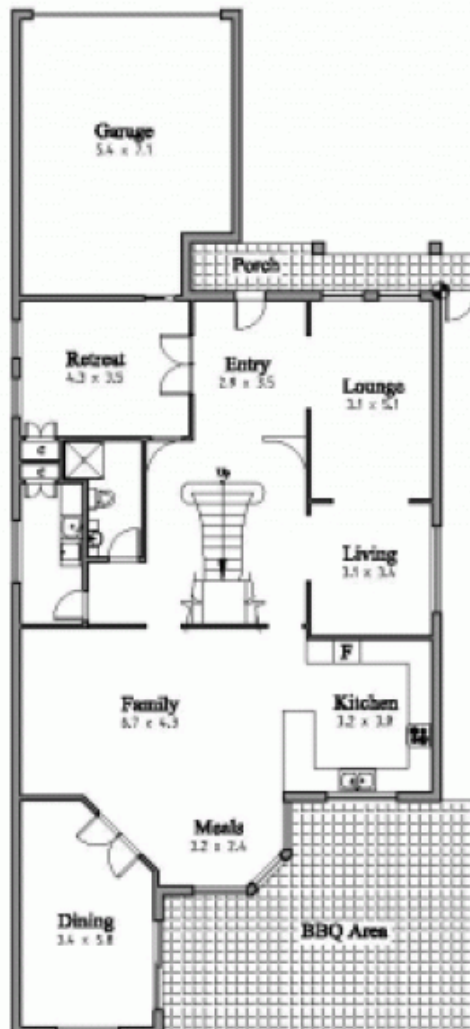
90 Turriel Point Road



SITE PLAN



FIRST FLOOR



GROUND FLOOR