



## B1/14-16 Deeban Walk CRONULLA NSW

3 2 2

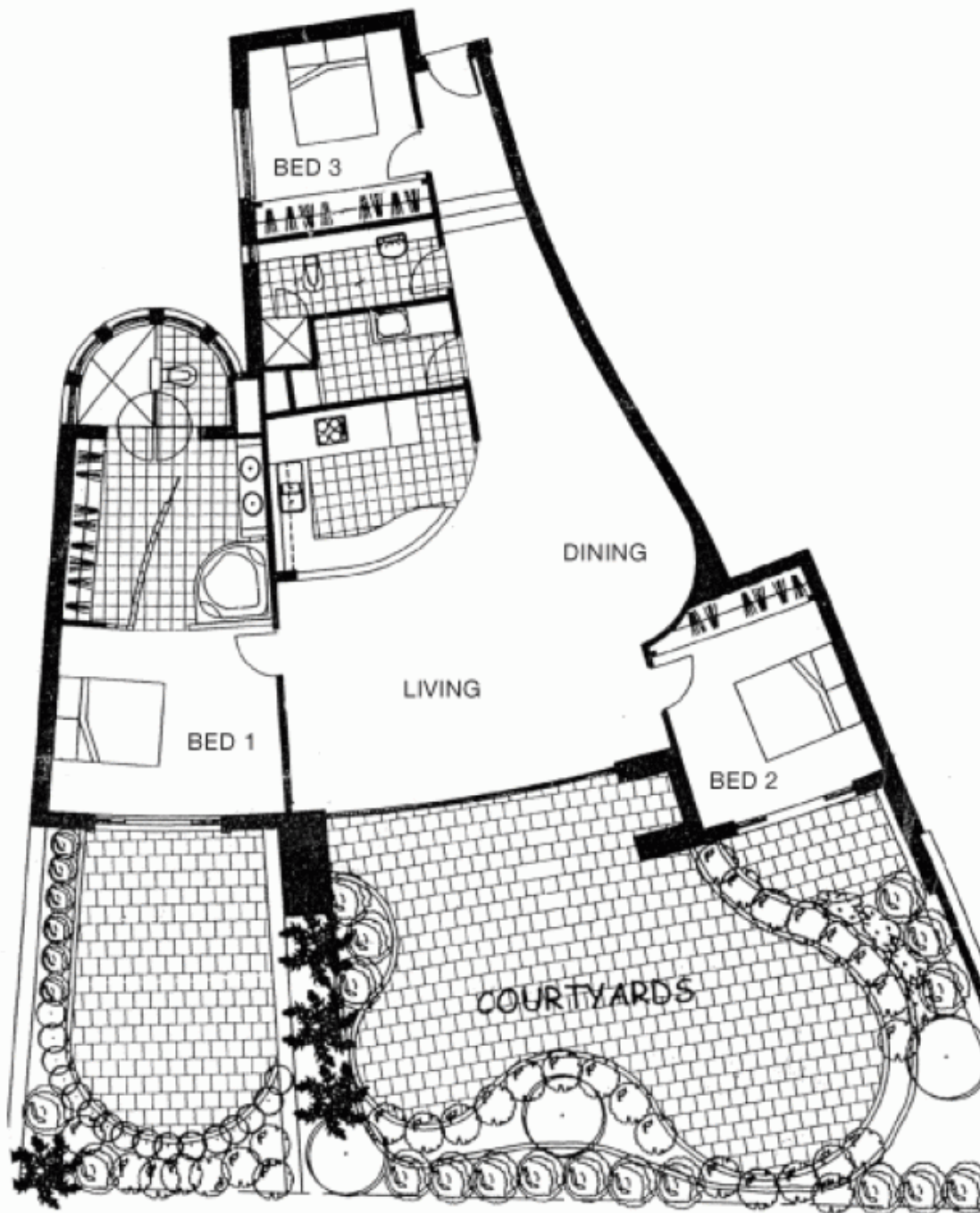
Unquestionably one of Cronulla's most impressive boutique developments, Tara' is a secluded haven enviably located just moments from Gunnamatta Bay and the Port Hacking River waterfront.

Reminiscent of a luxurious boutique hotel set among meandering tropical gardens, the award-winning building was built by renowned craftsman Michael Bezzina.

House-like in its proportions, privacy and ambience, this exceptional garden apartment is graced with world-class finishes, creating a residence of true international appeal.

Incorporating a sophisticated Miele gas kitchen with marble bench tops, the generous entertaining space opens seamlessly to a meticulously landscaped pet friendly

**Building Size** : 33 sqm  
**View** : <https://www.gibsonpartners.com/sale/nsw/sutherland/cronulla/residential/apartment/5852911>



# Floorplan

SIZE: 275m<sup>2</sup> unit + 36m<sup>2</sup> garage = 311m<sup>2</sup> total

Disclaimer: Payne Pacific Real Estate gives no guarantees or warranties concerning the accuracy or completeness of the information provided, and accepts no liability for any loss or damage suffered as a result of the use by any person of the contents of this document. It may not be reproduced by any process, electronic or otherwise, in any form, without the prior written permission of Payne Pacific Real Estate, except as permitted under the Copyright Act 1956.