






1/86 Gerrale Street CRONULLA NSW

2  2  1 

Situated in a well maintained security building just one block from The Esplanade, this very spacious 2 bedroom apartment offers an exciting opportunity to enjoy the relaxed lifestyle Cronulla is renowned for.

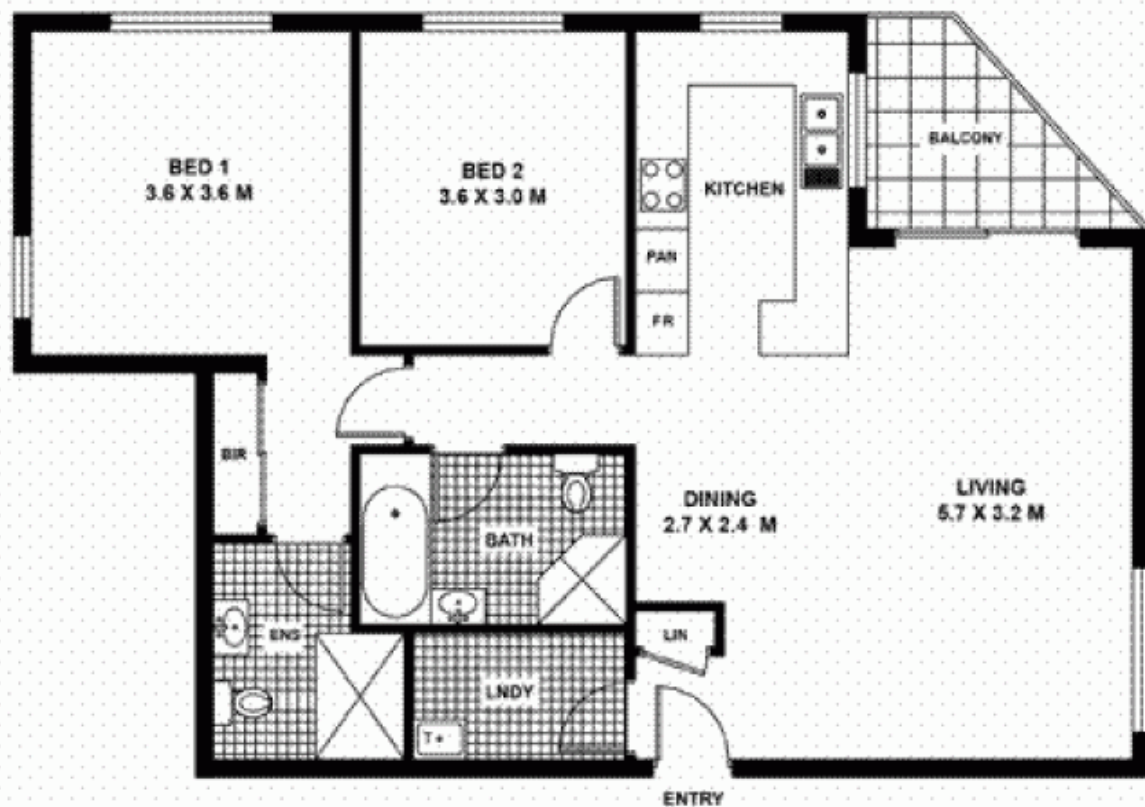
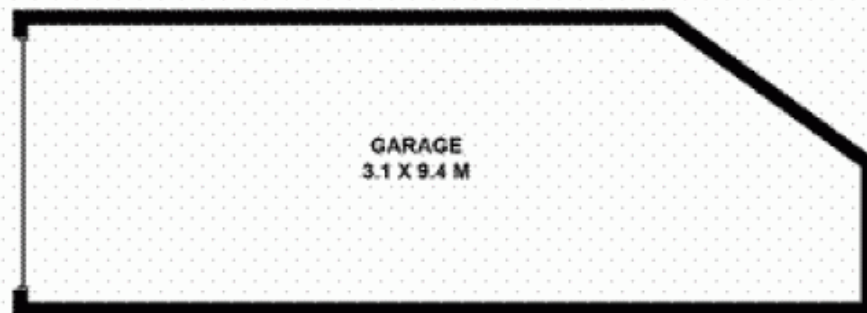
Boasting an elevated ground floor position and sunny north-east aspect, this lovely apartment represents an affordable opportunity for owner occupiers or investors alike.

- * 2 bedrooms with built-in robes, main with ensuite
- * Open plan lounge/dining areas & sunny balcony
- * Modern kitchen with granite bench-tops
- * Internal laundry with plenty of storage
- * Alarm, air-conditioning & video security
- * Extra large lock-up garage with storage

Building Size : 12 sqm
View : <https://www.gibsonpartners.com/sale/nsw/sutherland/cronulla/residential/apartment/5852914>



Ivan Lampret
02 9523 1333



**UNIT 1/86 GERRALE STREET,
CRONULLA**

DISCLAIMER: All care has been taken in preparing this floor plan, however the accuracy is not guaranteed and no liability will be accepted for any reliance placed upon it.

Produced by PRODUCT PHOTOGRAPHY STUDIO
mob: 0414 697 215 e: mgphoto@people.net.au