



20 Shipwright Place OYSTER BAY NSW

Build your dream home on this gently sloping block of north facing land (911sqm approx) which enjoys tranquil views over Oyster Bay and distant views to the city.

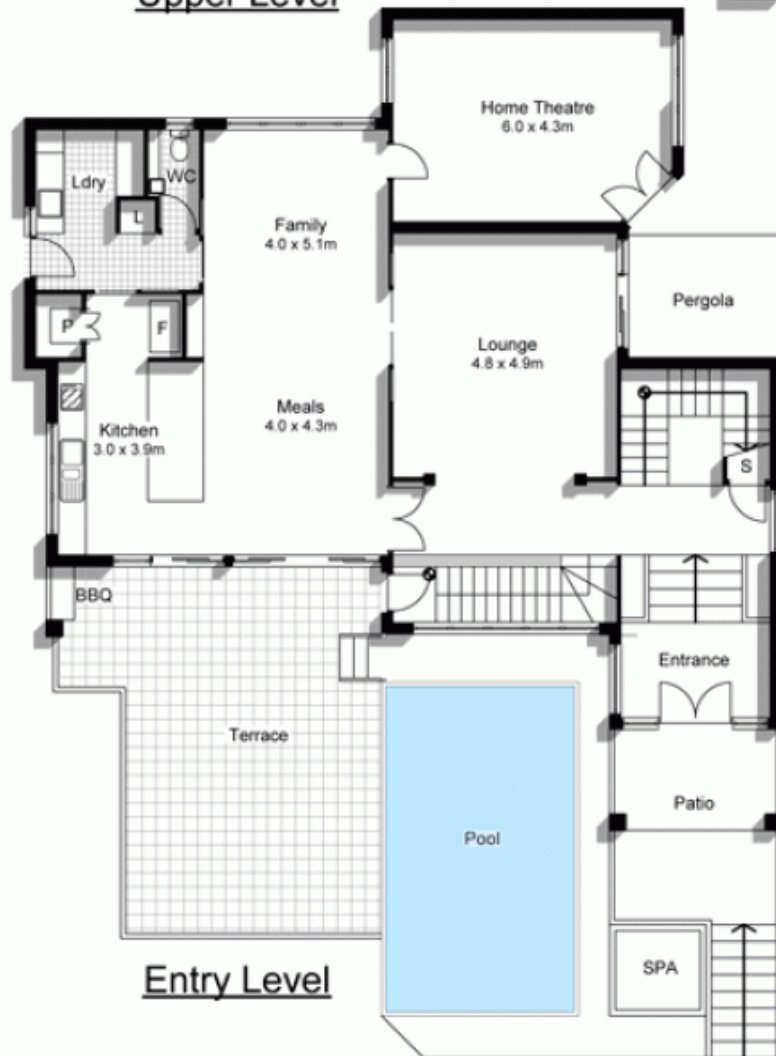
Architect designed plans have been D.A. approved for a magnificent 50sq home which would accommodate the largest of families.

Situated in a quiet cul-de-sac and surrounded by quality homes, Oyster Bay provides a desirable village lifestyle opportunity.

- Five bedrooms + study
- Four living areas
- Home theatre
- Double lock up garage + storage
- Fabulous terrace areas with views
- In ground pool + spa
- Clear block and ready to build

Land Size : 911 sqm

View : <https://www.gibsonpartners.com/sale/nsw/sutherland/oyster-bay/residential/land/5853267>



20 Shipwright Place
Oyster Bay

DISCLAIMER: All care has been taken in preparing this floor plan, however the accuracy is not guaranteed and no liability will be accepted for any reliance placed upon it
Produced by PRODUCT PHOTOGRAPHY STUDIO
mob: 0414 697 215 email: mgphoto@people.net.au