



## 7/52 Station Street Mortdale NSW

2 1 1

An ideal entry point or readymade investment, this top floor security apartment is set in a low rise block of eight and is situated only a short stroll to Mortdale village shops, restaurants and bus/rail transport.

Freshly painted and carpeted throughout this sunny two bedroom apartment offers scope to renovate and add further value. A great opportunity to capitalise on a convenient location along with a prized north-west aspect and a quiet, rear of block position.

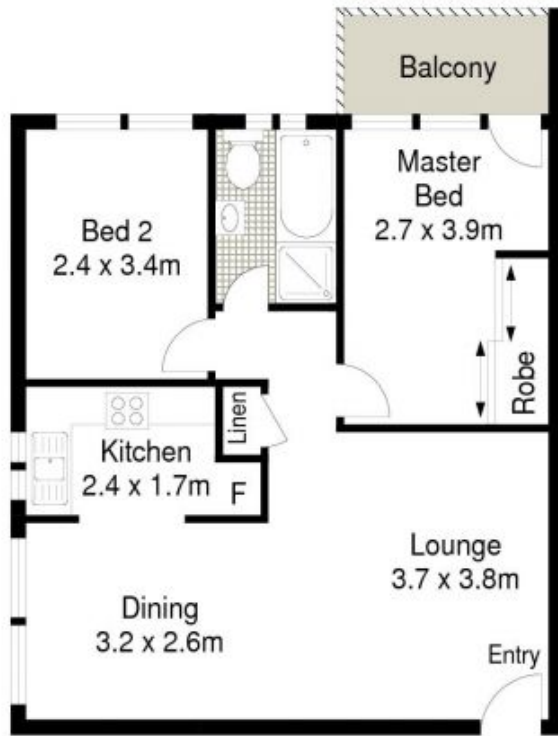
- 2 bedrooms, main with built-in robe & balcony
- Spacious, light-filled combined living/dining area
- Fresh paint and carpet, registered car space
- Separate kitchen, bathroom features shower & bath
- Security block, prized sunny position at rear of block

**Price** : \$ 400,000

**View** : <https://www.gibsonpartners.com/sale/nsw/st-george/mortdale/residential/apartment/5853748>



**Ivan Lampret**  
02 9523 1333



SCALE IN METERS.

## SECOND FLOOR



Scale in metres. Indicative only. Dimensions are approximate. All information contained herein is gathered from sources we believe to be reliable. However we cannot guarantee its accuracy and interested persons should rely on their own enquiries.

7/52 Station Street, Mortdale