



228 Burraneer Bay Road Caringbah South NSW

5 2 1

Situated on approximately 885.2sqm of prime real estate with a 15.25m frontage and offering the perfect opportunity for further development. This home provides tremendous potential to knock down and re-build, extend or renovate and add your own personal touch.

In need of some T.L.C, this original family residence provides an abundance of space, flexibility and natural light from its sunny northerly aspect and is positioned within moments to local schools, shops and transport.

- Huge north facing level 885.2sqm block with 15.25 metre frontage
- Generous proportions with multiple living and entertaining options
- Spacious kitchen, ample storage throughout, all

Price : \$ 1,006,900

View : <https://www.gibsonpartners.com/sale/nsw/sutherland/caringbah-south/residential/house/5853764>



Ivan Lampret
02 9523 1333

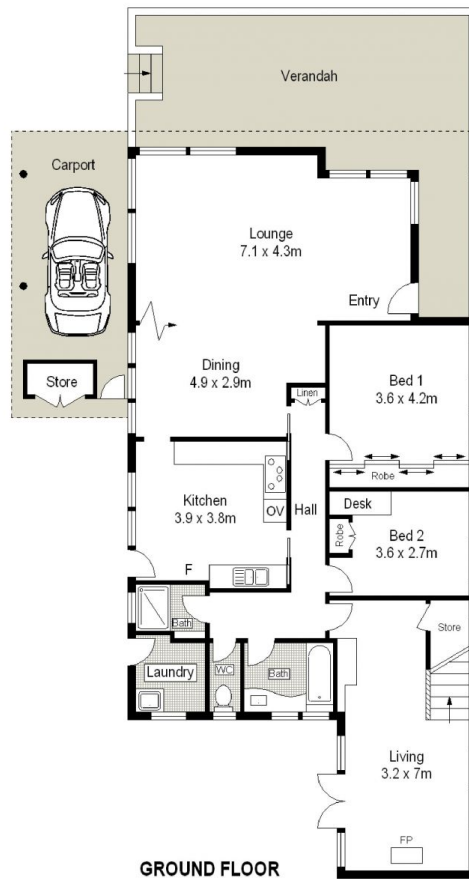


SITE PLAN (NOT TO SCALE)

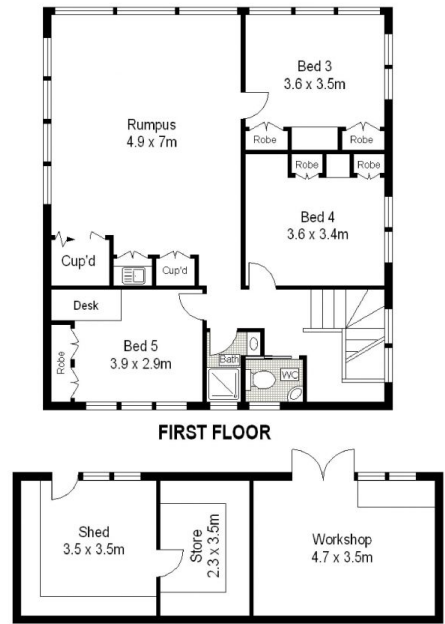
0 1 2 3 4 5 METERS.

Gibson Partners Real Estate Pty Ltd

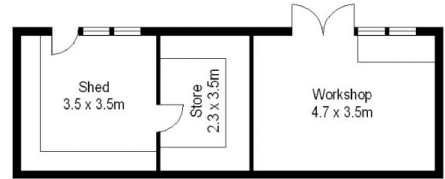
Scale in metres. Indicative only. Dimensions are approximate. All information contained herein is gathered from sources we believe to be reliable. However we cannot guarantee its accuracy and interested persons should rely on their own enquiries.



GROUND FLOOR



FIRST FLOOR



GROUND FLOOR



228 Burraneer Bay Road, Caringbah South

GIBSON