



5/121-123 Gannons Road Caringbah South NSW

3 2 4

Set in the prestigious 'Eclipse' development with a glorious north-easterly aspect, this near new townhouse has been cleverly designed with premium inclusions and thoughtfully customised cabinetry throughout.

Privately situated at the rear of the complex the interiors feature multiple living areas, ducted air conditioning and gas fireplace while the family and pet friendly yard includes a spectacular plunge pool, alfresco entertaining area and immaculate landscaped gardens.

Combining house like proportions with low maintenance lifestyle this stunning property provides a perfect opportunity for downsizers or families with an emphasis on light, luxury, and effortless living and entertaining.

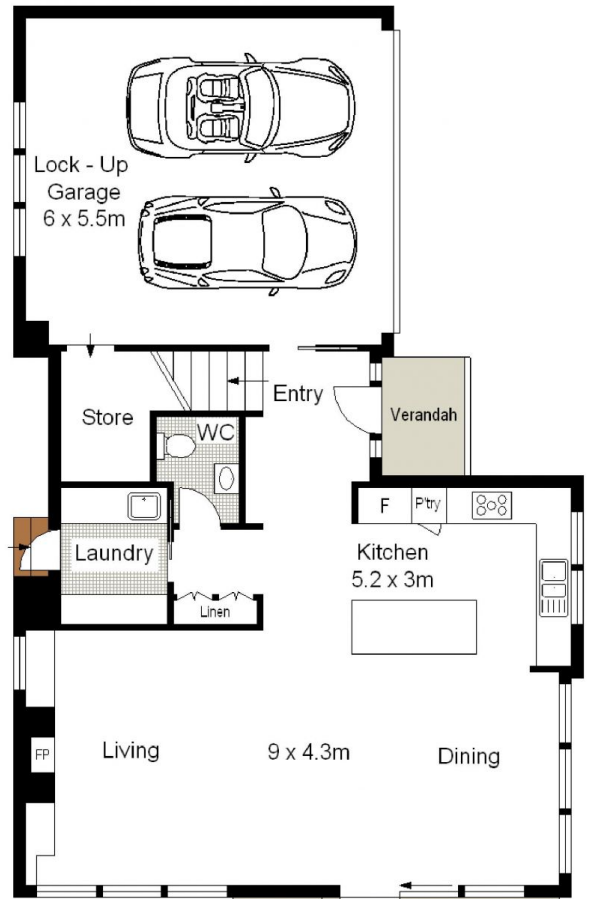
Price : \$ 1,408,000

Land Size : 332 sqm

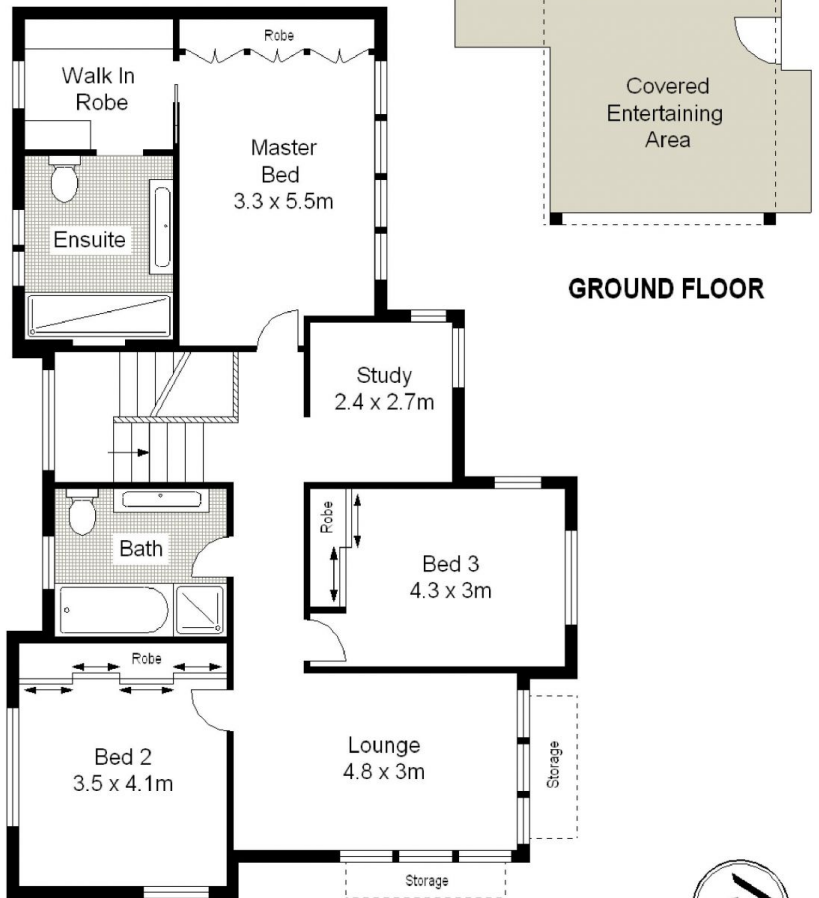
View : <https://www.gibsonpartners.com/sale/nsw/wetherland/caringbah-south/residential/townhouse/5853778>



Ivan Lampret
02 9523 1333



SITE PLAN (NOT TO SCALE)



GROUND FLOOR

FIRST FLOOR

0 1 2 3 4 5 SCALE IN METERS.

Gibson Partners Real Estate Pty Ltd

Scale in metres. Indicative only. Dimensions are approximate. All information contained herein is gathered from sources we believe to be reliable. However we cannot guarantee its accuracy and interested persons should rely on their own enquiries.



5/121-123 Gannons Road, Caringbah South

GIBSON