

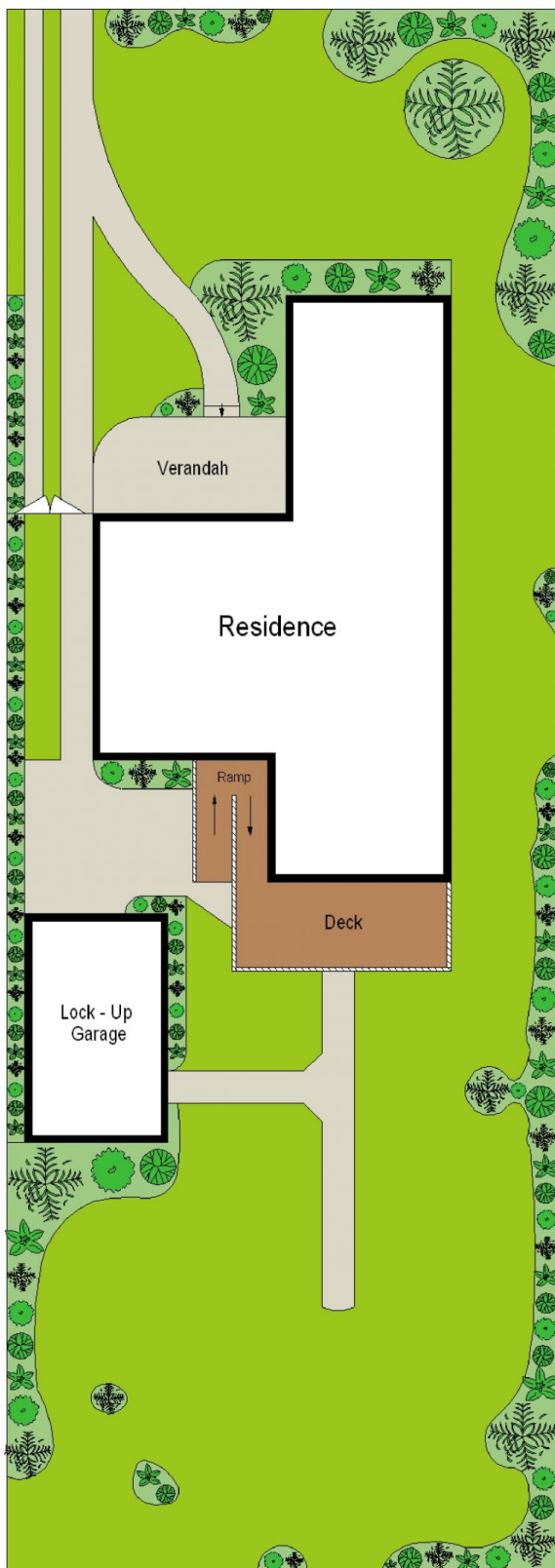


## 70 Crammond Boulevard Caringbah NSW

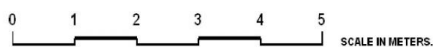
3 1 1

Situated on a level block this absolute treasure is located opposite a gorgeous children's playground and centrally located close to Caringbah local shops, schools and Cronulla's surfing beaches. Features: separate lounge & dining with open fireplace, 3 good size bedrooms, tidy kitchen & bathroom, high ceilings, internal laundry. Timber deck overlooking level lawns with large garden shed. Centrally located to local shops, schools & playground. Available for a 3 month lease initially with chance to extend.

**Land Size** : 645 sqm  
**View** : <https://www.gibsonpartners.com/lease/nsw/sutherland/caringbah/residential/house/5853811>

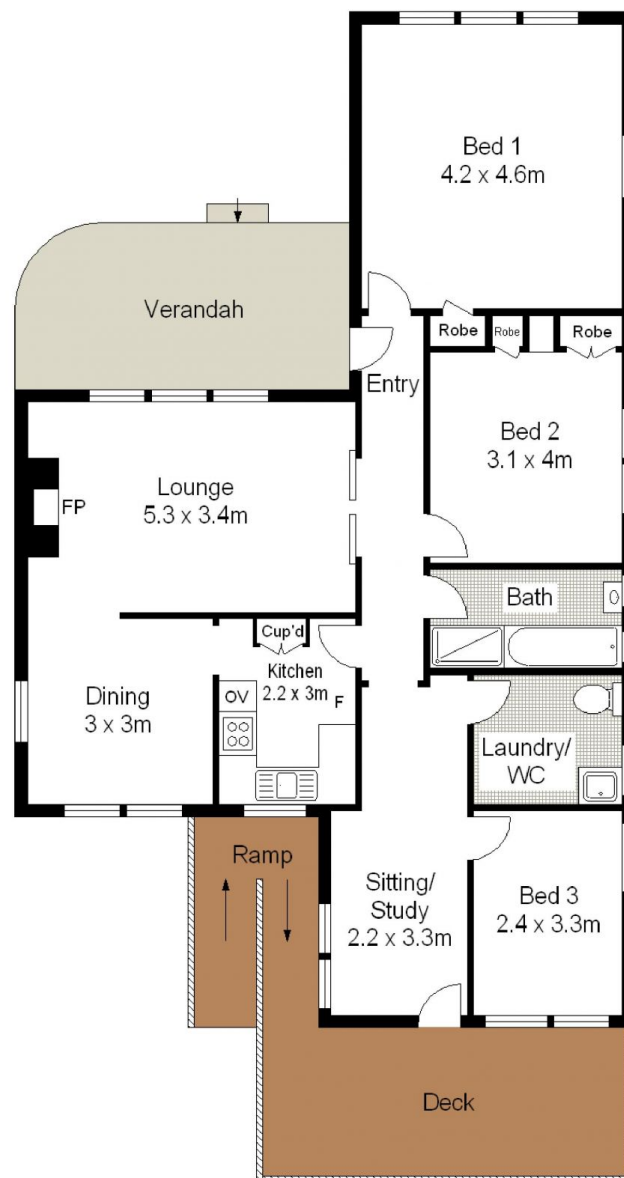
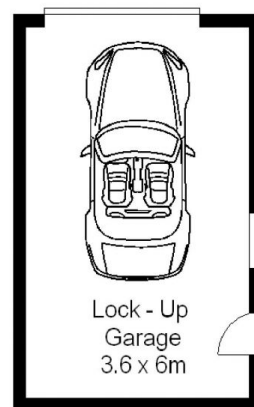


**SITE PLAN (NOT TO SCALE)**



Gibson Partners Real Estate Pty Ltd

Scale in metres. Indicative only. Dimensions are approximate. All information contained herein is gathered from sources we believe to be reliable. However we cannot guarantee its accuracy and interested persons should rely on their own enquiries.



**GROUND FLOOR**



70 Crammond Boulevard, Caringbah

**GIBSON**