



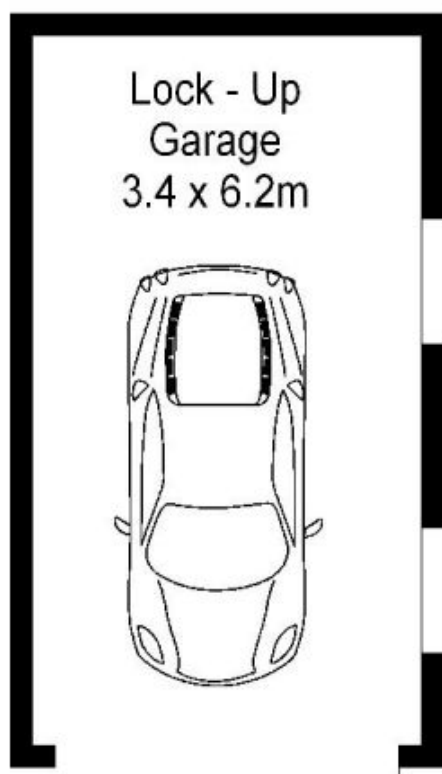
## 14/22 Hill Street Cronulla NSW

2 1 1

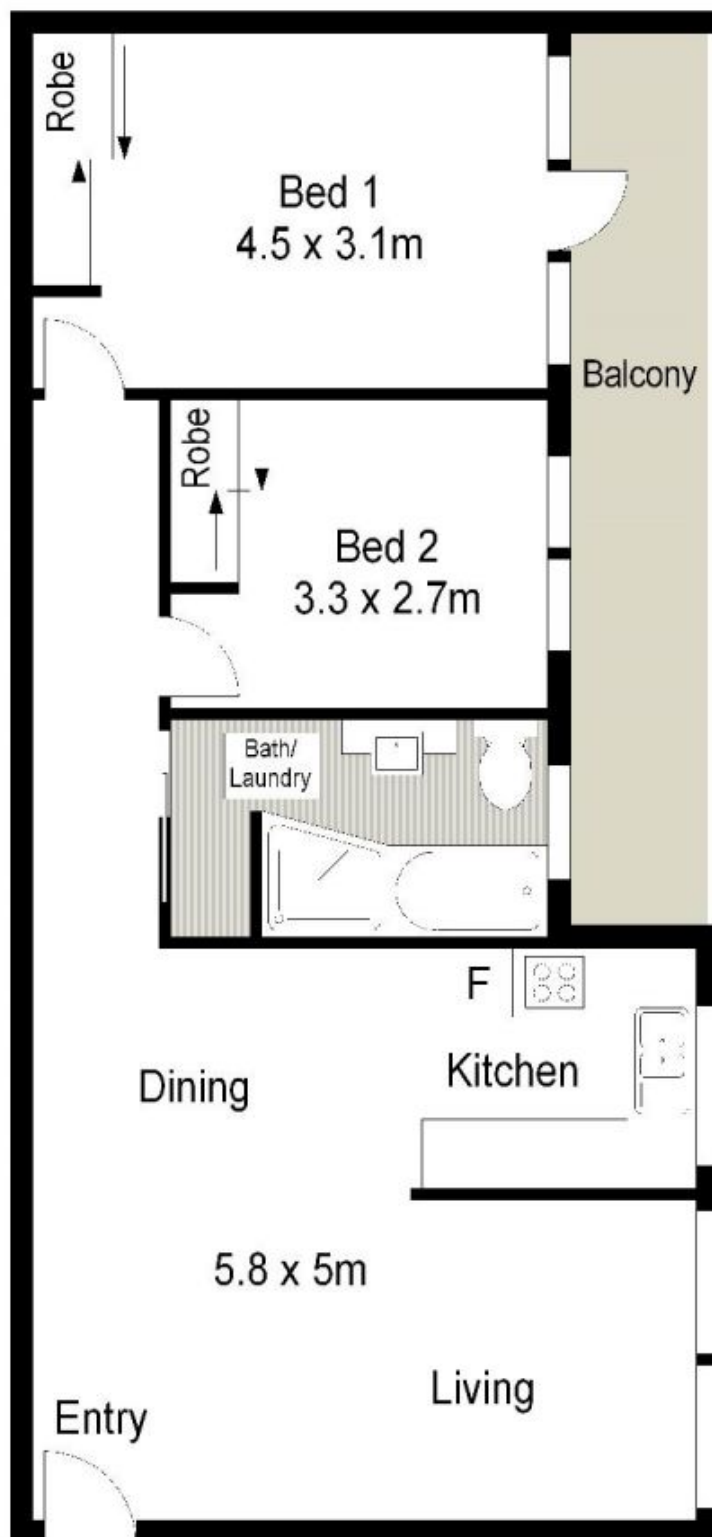
Situated on the top floor with a sunny westerly aspect, this neat two bedroom apartment is quietly located away from the hustle and bustle of Cronulla yet still within walking distance to Cronulla's beaches, shops and transport.

**View** : <https://www.gibsonpartners.com/lease/nsw/sutherland/cronulla/residential/apartment/5853839>

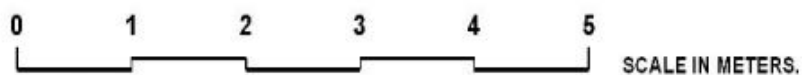
- Sun drenched west facing balcony with leafy outlook
- Generous bedrooms with BIR's & main with balcony
- Combined lounge & dining area with air conditioning
- Updated light-filled kitchen flowing through to living area
- Renovated bathroom with internal laundry facilities
- Single LUG



**GROUND FLOOR**



**TOP FLOOR**



Gibson Partners Real Estate Pty Ltd

Scale in metres. The above only dimensions are approximate. All information contained herein is gathered from sources we believe to be reliable, however we cannot guarantee its accuracy and interested persons should rely on their own enquiries.



14/22 Hill Street, Woollooware

**GIBSON**