



10 Excelsior Road Cronulla NSW

4 2 2

Secluded in a quiet prestigious location and bathed in glorious sunshine, this spacious dual level residence showcases breathtaking views over Gunnamatta Bay to Bundeena.

Boasting spacious light filled interiors, a fantastic undercover entertaining terrace and private tropical landscaped gardens, this lovely bayside home also provides further scope to enhance or add your own personal touches.

Catering to a low maintenance lifestyle of absolute convenience, this property is centrally located within an easy stroll to Cronulla's restaurants, shops, beaches, marina, ferry, boat ramp and transport.

Price : \$ 1,800,000

Land Size : 575.4 sqm

View : <https://www.gibsonpartners.com/sale/nsw/utherland/cronulla/residential/house/5853851>



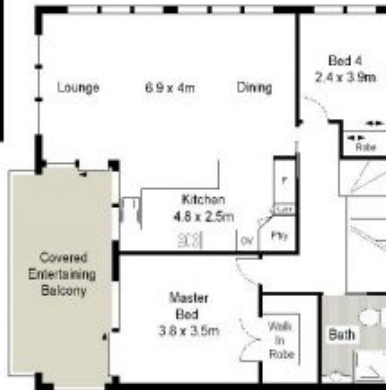
Ivan Lampret
02 9523 1333



Karla Madgwick
02 9523 1333



GROUND FLOOR



FIRST FLOOR



SITE PLAN (NOT TO SCALE)



Gibson Partners Real Estate Pty Ltd

Scale is approximate and for reference only. Dimensions and floor area are approximate and based on the information provided. All information contained herein is for general information only and does not constitute an offer of real estate services. Please contact your real estate agent for more information.

10 Excelsior Road, Cronulla



GIBSON