



280 Princes Highway Sylvania NSW

3 1 1

This is a rare and valuable opportunity to secure a double brick residence situated on a level block of approximately 708sqm perfect for redevelopment.

Bathed in glorious sunshine and nestled between two commercial sites with huge potential for a developer or business owner to re-build, update, extend or reinvent.

With endless opportunities this home is conveniently located close to Southgate Shopping Centre, local shops, schools and transport.

- Land size approx. 708sqm - huge potential for developers
- Formal lounge room with French doors & polished floors
- Original kitchen, dining room, internal laundry with W/C
- 3 king size bedrooms all with wardrobes & high ceilings

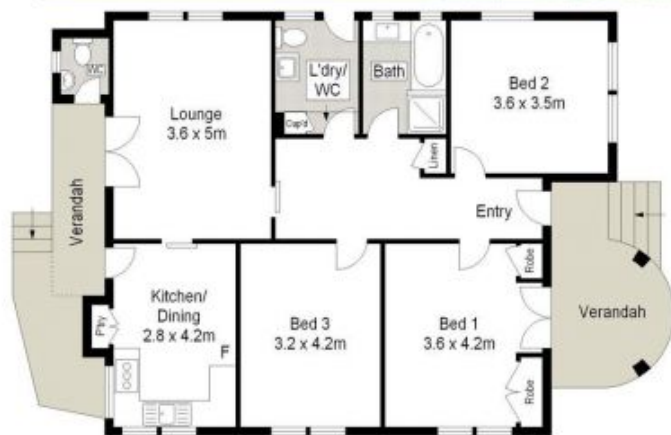
Price : \$ 1,305,000
Land Size : 708 sqm
View : <https://www.gibsonpartners.com/sale/nsw/sutherland/sylvania/residential/house/5853890>



Ivan Lampret
02 9523 1333

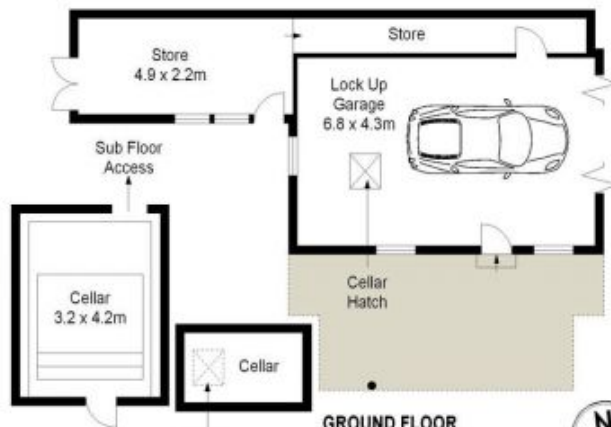


Karla Madgwick
02 9523 1333



GROUND FLOOR

SITE PLAN (NOT TO SCALE)



GROUND FLOOR

0 1 2 3 4 5 METRES

Gibson Partners Real Estate Pty Ltd

Scale in meters. Indicative only. Dimensions are approximate. All information contained herein is gathered from sources we believe to be reliable. However we cannot guarantee its accuracy and interested persons should rely on their own enquiries.



280 Princes Highway, Sylvania

GIBSON