



12 Taloombi Street Cronulla NSW

4 2 1

Showcasing sensational views over Gunnamatta Bay and ideally positioned in an exclusive blue ribbon locale, this original family haven provides endless possibilities with its versatile floorplan, high ceilings and prized coastal location.

Oozing a lifestyle of convenience, this home is located in a quiet cul-de-sac on the high side of the street enjoying glorious westerly sunshine and only footsteps to picturesque Gunnamatta Park, Cronulla Ferry, sensational beaches, restaurants, cafes and transport.

- Expansive views over Gunnamatta Bay
- Original throughout with fantastic potential
- Spacious eat in kitchen, formal dining area
- 4 bedrooms, main with built-in robe & ensuite
- Sundrenched balcony with westerly aspect

View : <https://www.gibsonpartners.com/sale/nsw/sutherland/cronulla/residential/house/5853935>



Ivan Lampret
02 9523 1333



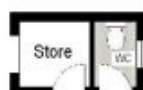
GROUND FLOOR



Gibson Partners Real Estate Pty Ltd

Scale is approximate and for reference only. All dimensions are approximate and may vary slightly from actual dimensions. All information is provided for general information only and is not intended to be relied upon for any specific purpose. All information is provided for general information only and is not intended to be relied upon for any specific purpose.

12 Taloombi Place, Cronulla South



SITE PLAN (NOT TO SCALE)



GIBSON