



## 4/16 Coast Avenue Cronulla NSW

3 2 1

Seldom offered and rarely found, this unique dual level apartment is situated directly on The Esplanade with an open ocean vista. Boasting deceptively grand proportions behind its discreet façade, this 3 bedroom residence exudes extraordinary flair and tremendous future potential.

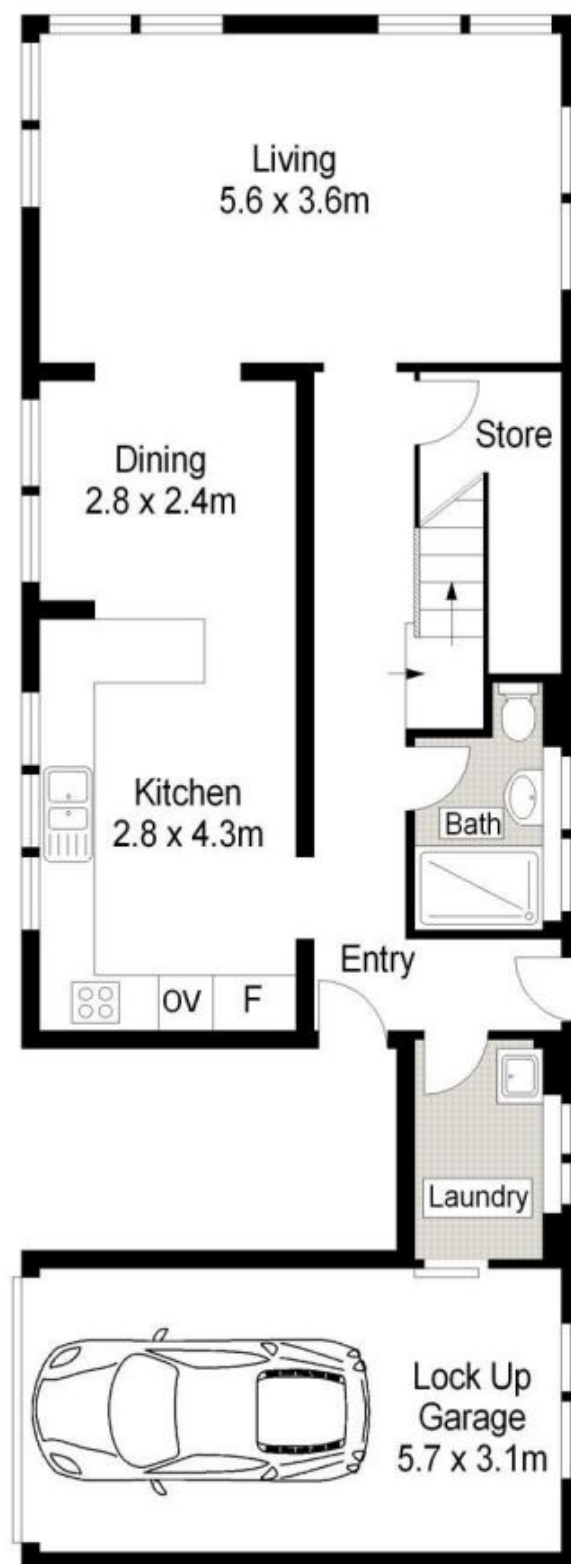
Whether you like an early morning walk, a paddle, a swim or surf, it's all at your doorstep or just sit back and enjoy the ocean views from the comfort of your own lounge room.

- Unique dual level apartment with views enjoyed from every room
- Direct access to The Esplanade from your own back door
- Large kitchen with breakfast bar & adjoining dining area
- Separate living room drenched in breathtaking water views

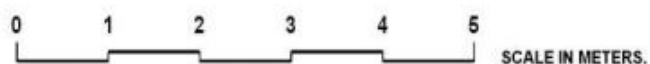
**View** : <https://www.gibsonpartners.com/lease/nsw/sutherland/cronulla/residential/apartment/5854131>



FIRST FLOOR



GROUND FLOOR



Gibson Partners Real Estate Pty Ltd

Scale in metres. Indicative only. Dimensions are approximate. All information contained herein is gathered from sources we believe to be reliable. However we cannot guarantee its accuracy and interested persons should rely on their own enquiries.



4/16 Coast Avenue, Cronulla South

**GIBSON**