



39 Mirral Road Caringbah South NSW

5 3 4

This impressive dual level family residence set on an exceptional 917sqm block boasts beautiful water and bush views of The Port Hacking River & Royal National Park from every level. Relishing in rolling level lawns, alfresco outdoor entertaining and manicured landscaping, enjoying park like surrounds at your doorstep.

Immaculately presented throughout with a versatile floorplan to suit any family, this remarkable 5 bedroom home enjoys a premiere Caringbah South address and is situated within moments to Lilli Pilli Public school, local shops and transport.

- Versatile floorplan with a choice of formal & informal living spaces
- 2 fabulous entertaining balconies with scenic Port

Land Size : 917 sqm

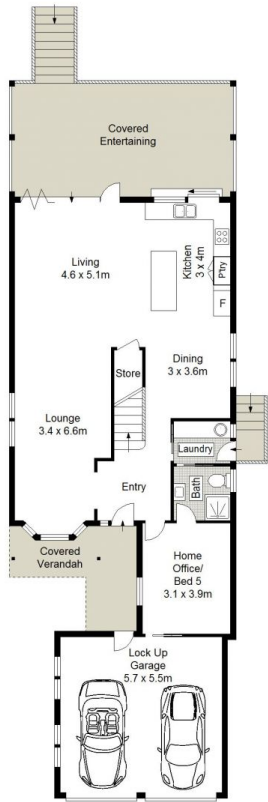
View : <https://www.gibsonpartners.com/sale/nsw/sutherland/caringbah-south/residential/house/5854270>



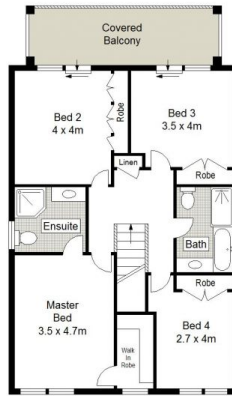
Ivan Lampret
02 9523 1333



Briolynn Kennedy
02 9523 1333



GROUND FLOOR



FIRST FLOOR



**SITE PLAN
(NOT TO SCALE)**



0 1 2 3 4 5 SCALE IN METRES.

Gibson Partners Real Estate Pty Ltd

Scale in metres. Indicative only. Dimensions are approximate. All information contained herein is gathered from sources we believe to be reliable. However we cannot guarantee its accuracy and interested persons should rely on their own enquiries.

39 Mirral Road, Caringbah South

GIBSON