



10 Swan Street Lilli Pilli NSW

5 2 4

Occupying what is undoubtedly one of the Shire's most spectacular settings, this magnificent family home is located on the prestigious Lilli Pilli peninsula and embraces intimate 270 degree views over the Port Hacking river stretching across to the pristine bushland of the Royal National Park.

Spread over 3 spacious levels and designed to entertain, the home boasts a solar heated in ground pool, beautifully landscaped surrounds, an abundance of accommodation and fluid living spaces that extend effortlessly outdoors and maximise the premium outlook. The peaceful cul de sac setting also provides street access to the pristine waters of Lilli Pilli baths.

Price : \$ 2,500,000

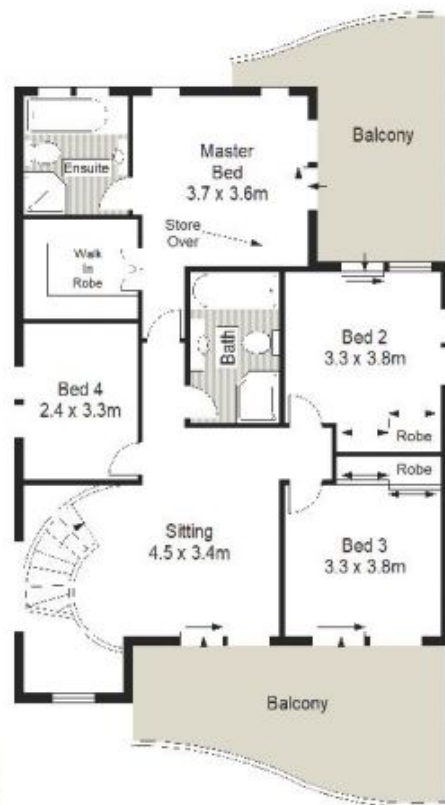
View : <https://www.gibsonpartners.com/sale/nsw/sutherland/lilli-pilli/residential/house/5854316>



Ivan Lampret
02 9523 1333



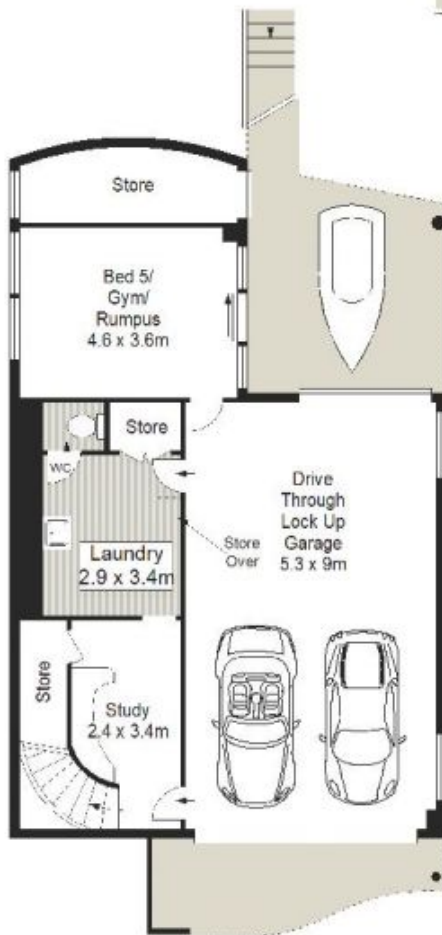
Karla Madgwick
02 9523 1333



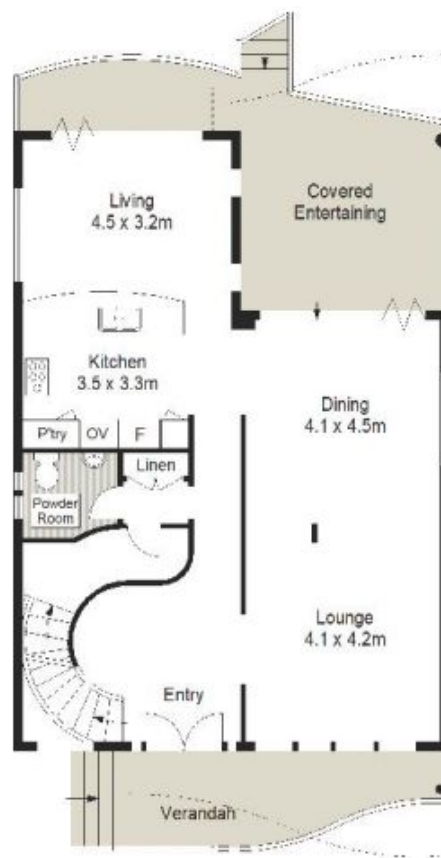
FIRST FLOOR



SITE PLAN
(NOT TO SCALE)



LOWER GROUND FLOOR



GROUND FLOOR



Gibson Partners Real Estate Pty Ltd

Scale in metres, inclusive only. Dimensions are approximate. All information contained herein is gathered from sources we believe to be reliable, however we cannot guarantee its accuracy and interested persons should rely on their own enquiries.

