



289 Woollooware Road Burraneer NSW

4 2 3

Spanning across three spacious levels and enjoying breathtaking uninterrupted water views of Burraneer Bay with deep waterfront access, this residence offers a generous selection of living areas that flow freely to expansive terraces capitalising on its spectacular setting and stunning surroundings ideal for family living and year-round entertaining.

Positioned in a desirable lifestyle location and privately set on an 1123sqm (approx.) parcel of land, this sizeable waterfront home has an abundance of features providing the perfect escape to your own private sanctuary whilst enjoying the enticing delights of local cafes, restaurants & beaches.

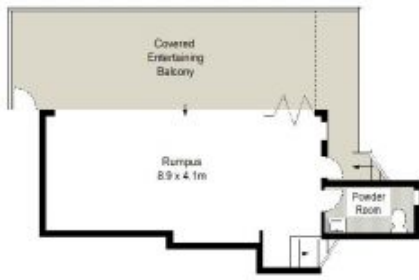
- Featuring bright open living & dining spaces that flow out

Land Size : 1123 sqm

View : <https://www.gibsonpartners.com/sale/nsw/utherland/burraneer/residential/house/5854337>



Ivan Lampret
02 9523 1333



GROUND FLOOR



LOWER GROUND FLOOR



LOWER GROUND FLOOR



LEVEL ONE



SITE PLAN
(NOT TO SCALE)



0 1 2 3 4 5 METRES

Gibson Partners Real Estate Pty Ltd

Scale: 1:100 (not to scale). All dimensions are approximate and based on the information provided. The information is provided for general information only and should not be relied upon for any specific purpose. The information is provided for general information only and should not be relied upon for any specific purpose.

289 Woollooware Road, Burraneer

GIBSON