



## 36 Parthenia Street Dolans Bay NSW

5 3 2

Privately secluded away from the hustle & bustle, and boasting a generous land size of 948.5sqm (approx.), combined with a picturesque garden setting and convenient access to the water's edge of the Port Hacking river, this desirable property will appeal to a wide demographic of buyers.

Immaculately presented with loads of features, this tri-level family home has been thoughtfully configured to make full use of the flexible accommodation options with multiple living and entertaining spaces assuring family comfort in this premium address, situated just minutes to Dolans Bay Marina, local schools and transport.

- Open plan family living/dining flows seamlessly to alfresco entertaining terrace

**Price** : \$ 1,920,000

**Land Size** : 948.5 sqm

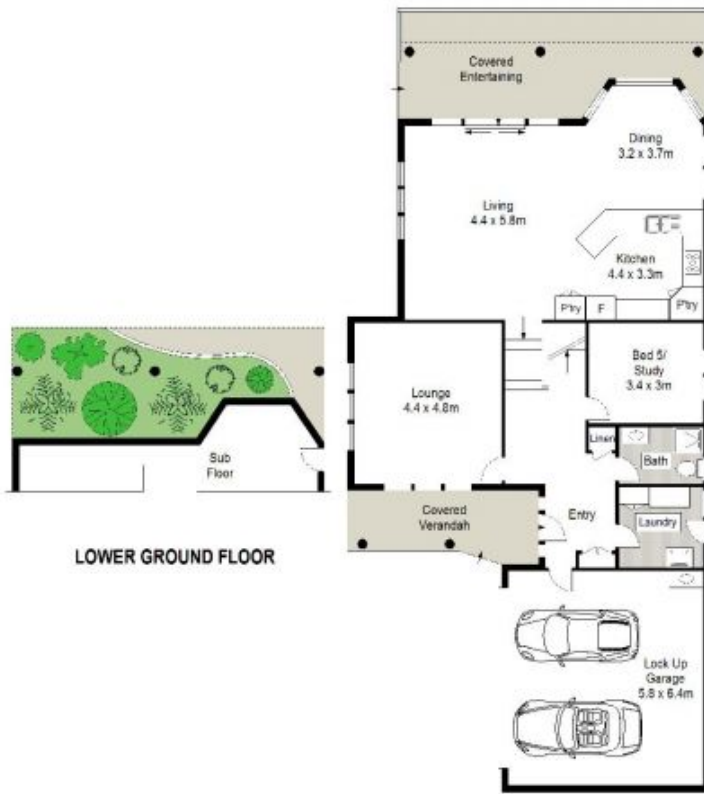
**View** : <https://www.gibsonpartners.com/sale/nsw/utherland/dolans-bay/residential/house/5854341>



**Ivan Lampret**  
02 9523 1333



**Karla Madgwick**  
02 9523 1333



**SITE PLAN  
(NOT TO SCALE)**

0 1 2 3 4 5  
SCALE IN METRES

**GROUND FLOOR**

Gibson Partners Real Estate Pty Ltd

Scale is approximate. Indicated only. Dimensions are approximate. All information contained herein is for general information only and does not constitute a contract. It is not intended to be relied upon for any purpose. It is not intended to be relied upon for any purpose. It is not intended to be relied upon for any purpose.



36 Parthenia Street, Dolans Bay

**GIBSON**