



7/31 Premier Street GyMEA NSW

3 2 2

Sensationally renovated throughout this fabulous executive apartment offers spacious open plan living areas which flow to an expansive wrap around balcony.

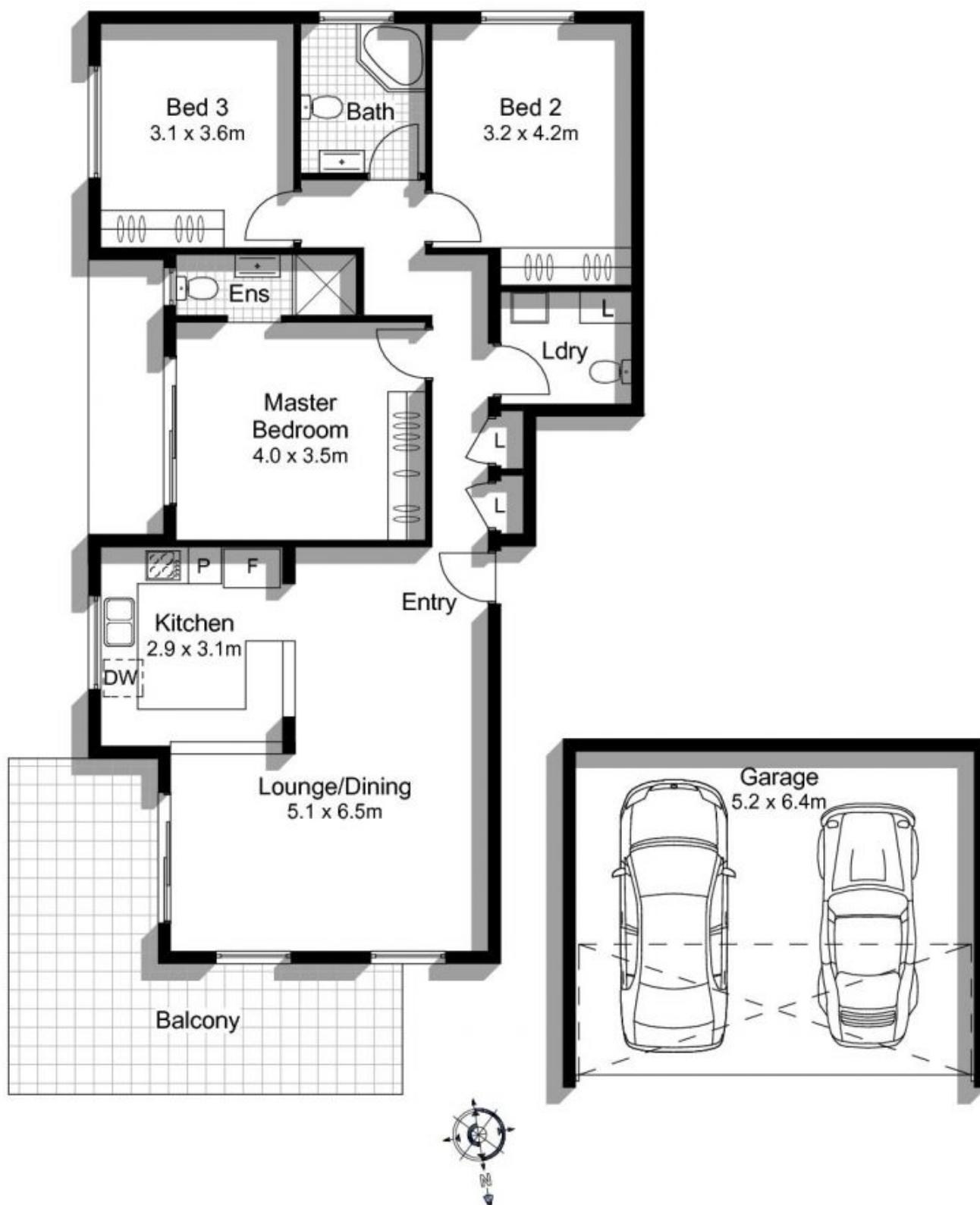
View : <https://www.gibsonpartners.com/lease/nsw/sutherland/gyMEA/residential/apartment/5854378>

Situated on the top floor in a modern security block it enjoys an ideal North/East aspect with a peaceful leafy outlook and is centrally located within a short stroll to GyMEA Shopping Village.

- 3 generous sized bedroom all with built in robes
- Poly/Caesar kitchen with dishwasher and gas cooking
- Polished timber flooring throughout
- Stylish fully tiled bathrooms
- 2nd balcony and ensuite in master bedroom
- Additional toilet in laundry
- Only one common wall



Amber Dare
02 9523 1333



**7/31 Premier Street
GYMEA**

DISCLAIMER: All care has been taken in preparing this floor plan, however the accuracy is not guaranteed and no liability will be accepted for any reliance placed upon it
Produced by PRODUCT PHOTOGRAPHY STUDIO
mob: 0414 697 215 email: mgphoto@people.net.au