

4 Babbins Place Caringbah South NSW

3 1 1

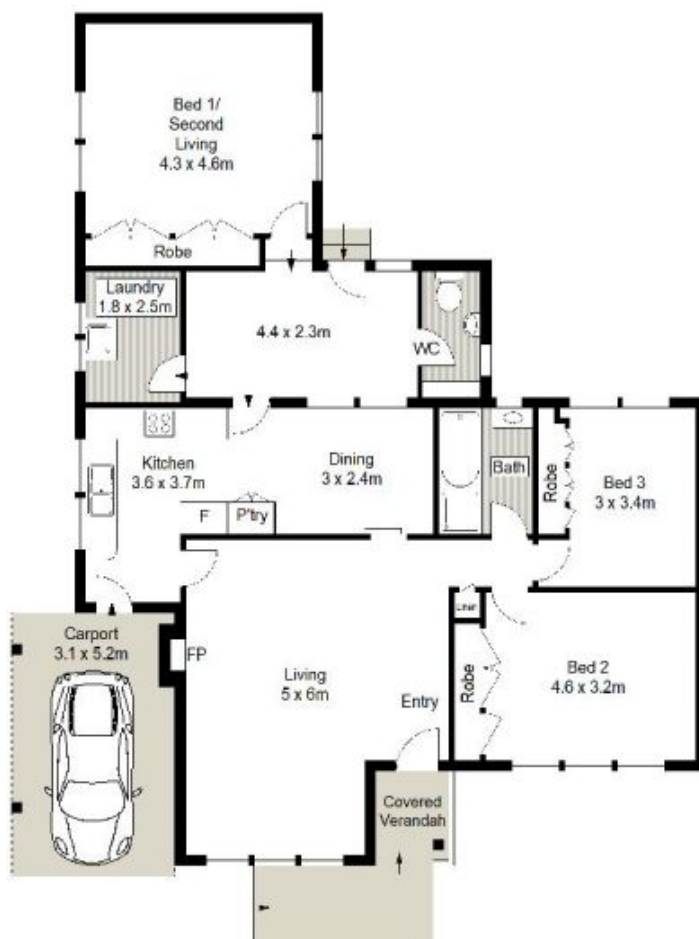
Set on a near level block of 619sqm (approx.) in a quiet tree lined cul-de-sac, this charming full brick family home is a great opportunity for buyers to take advantage of the convenient location and exceptional potential to update, extend or build your dream home. Currently occupied by a long term tenant, this property also offers a great investment opportunity.

Immaculately presented throughout and offering three bedrooms with built-in robes, spacious living room with gas heating and neat kitchen with adjoining dining room, internal laundry, large backyard and single carport. A tightly held and sought after location all within minutes to Laguna Public School, Caringbah shopping village, cafes and Camelia Gardens.

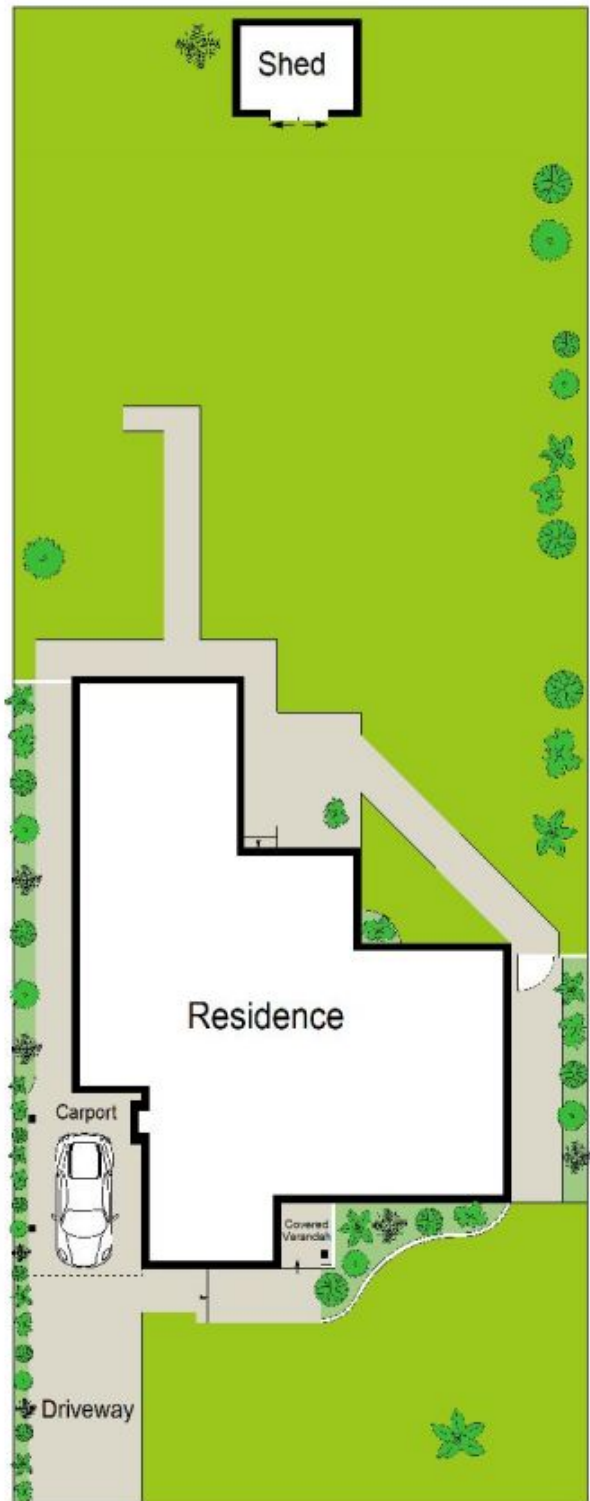
Price : \$ 1,310,000
Land Size : 619 sqm
View : <https://www.gibsonpartners.com/sale/nsw/sutherland/caringbah-south/residential/house/5854391>



Chris Walsh
02 9523 1333



GROUND FLOOR



SITE PLAN (NOT TO SCALE)

0 1 2 3 4 5
SCALE IN METRES

Gibson Partners Real Estate Pty Ltd

Scale in metres. The above only dimensions are approximate. All information contained herein is gathered from sources we believe to be reliable, however we cannot guarantee its accuracy and interested persons should rely on their own enquiries.

