



209 Ewos Parade Cronulla NSW

4 4 3

Soaring over three spacious levels and capturing a picturesque outlook of the Royal National Park and impressive water views this expansive family residence presents the perfect family lifestyle in a desirable South Cronulla locale and just minutes to Salmon Haul beach, The Esplanade, Darook Park, local schools and the bus stop to take you directly to Cronulla.

Configured to cater for the growing family featuring generous accommodation options spread over a flexible floorplan with a choice of living areas, in-law or guest room with ensuite, spacious balcony, family room with built-in bar extending freely to a low maintenance paved yard overlooking a sparkling in-ground pool.

- Four bedrooms, master with ensuite, water views, walk-in

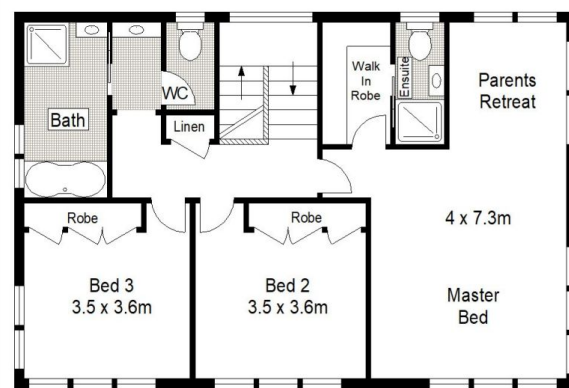
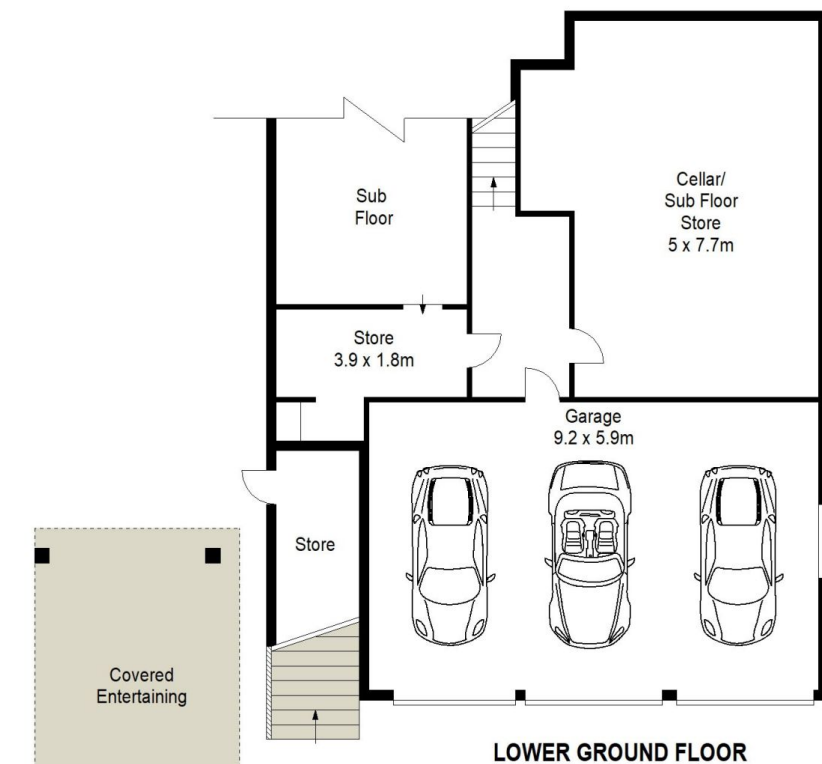
Price : \$ 2,100,000
Land Size : 581.7 sqm
View : <https://www.gibsonpartners.com/sale/nsw/sutherland/cronulla/residential/house/585439>
 9



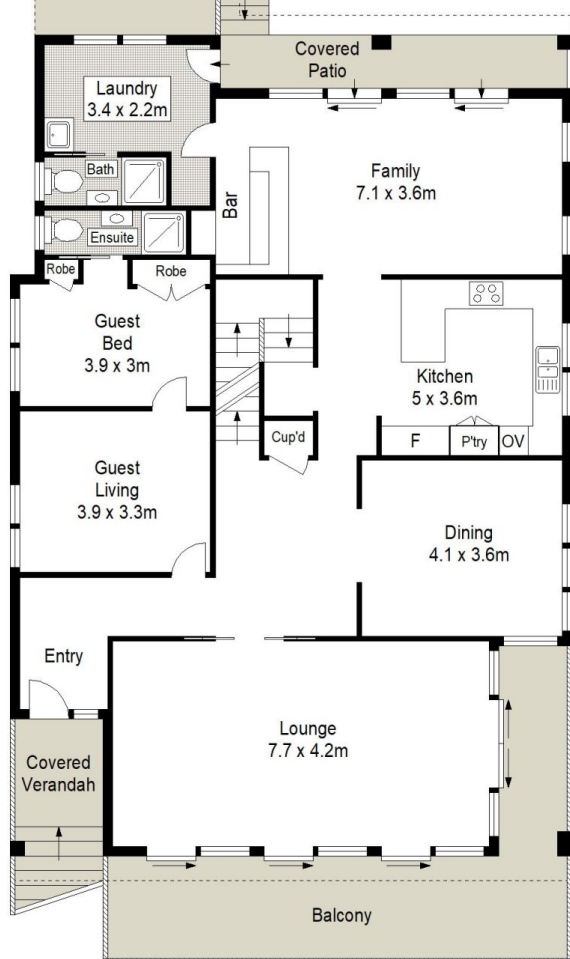
Ivan Lampret
02 9523 1333



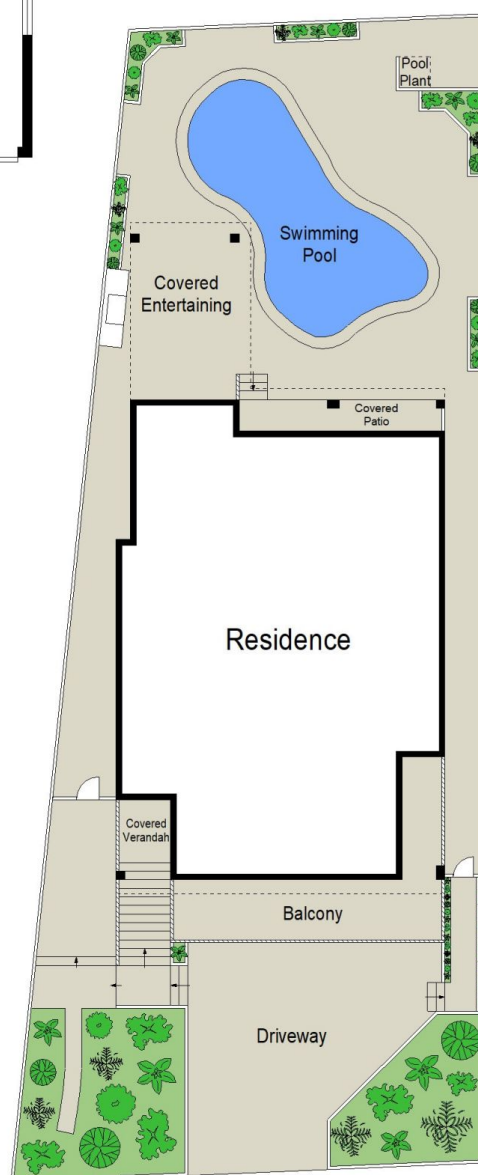
Justin Buck
02 9523 1333



FIRST FLOOR



GROUND FLOOR



SITE PLAN (NOT TO SCALE)

0 1 2 3 4 5
SCALE IN METRES.

Gibson Partners Real Estate Pty Ltd

Scale in metres. Indicative only. Dimensions are approximate. All information contained herein is gathered from sources we believe to be reliable. However we cannot guarantee its accuracy and interested persons should rely on their own enquiries.

