



22/97-103 Denman Avenue Woollooware NSW

2 🛏 1 🚿 1 🚗

Ideally positioned and offering immaculate contemporary interiors this two bedroom townhouse is perfect for first home buyers, downsizers or investors. An appealing property with a wonderful sun-drenched outdoor entertaining haven ideal for hosting friends and family.

Price : \$ 860,000

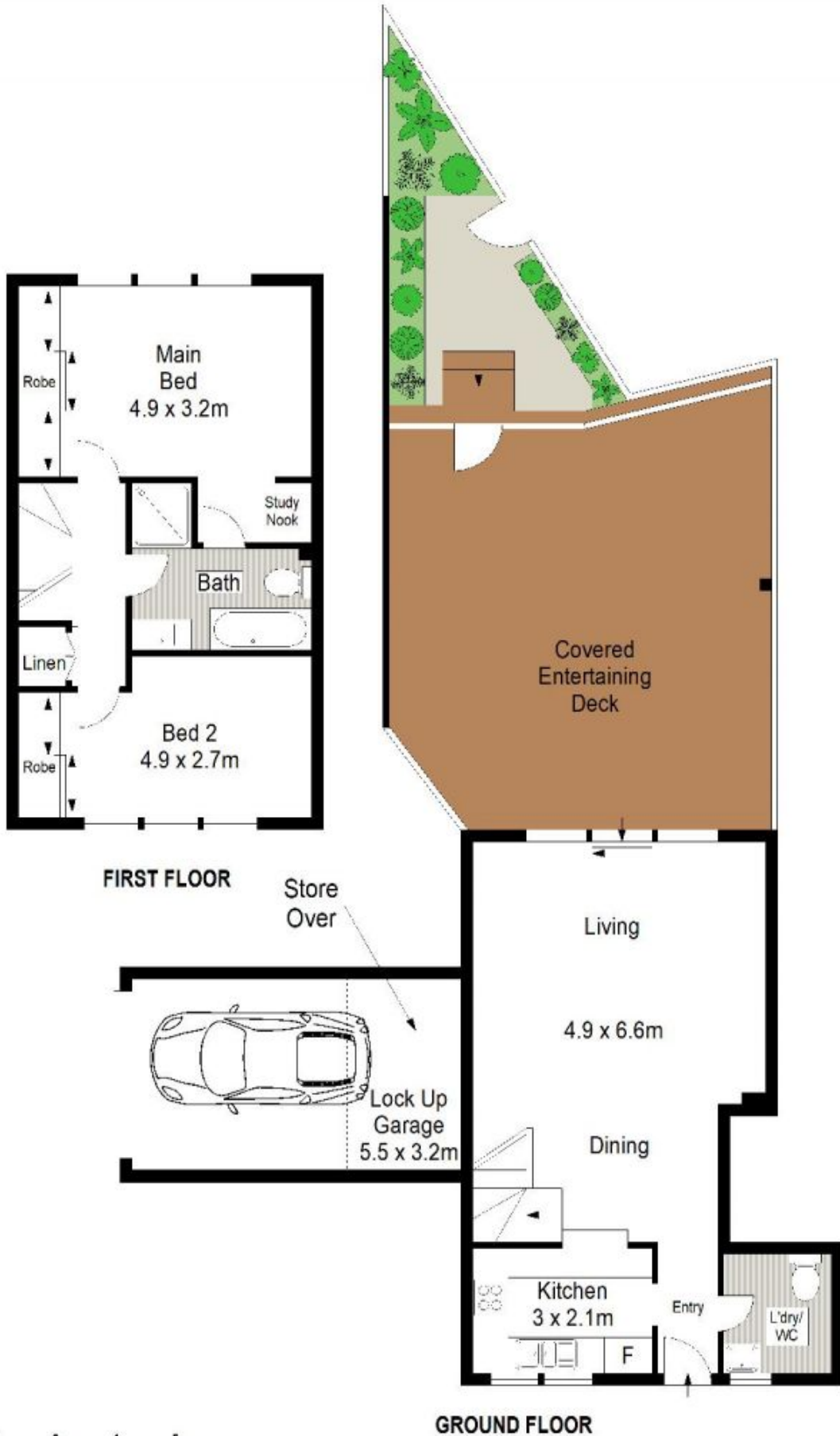
View : <https://www.gibsonpartners.com/sale/nsw/sutherland/woollooware/residential/townhouse/5854423>

Boasting a modern kitchen, good sized bedrooms, two way bathroom, internal laundry, low-maintenance living and dining area that flow to a wide alfresco deck and leafy outlook. All within minutes to shopping, cafes, Woollooware Golf Club and transport options.

- Open plan design with light filled combined living & dining area
- Two bedrooms, BIR's, main with study area & access to bathroom



Ivan Lampret
02 9523 1333



Gibson Partners Real Estate Pty Ltd

Scale in metres. The above only information is approximate. All information contained herein is gathered from sources we believe to be reliable, however we cannot guarantee its accuracy and interested persons should rely on their own enquiries.

