



31 Crescent Road Caringbah South NSW

4 🏠 3 🚗 3 🚗

Perfectly situated in a highly sought after pocket of the Shire, this sensational home with high quality elegant finishes and fittings exudes timeless Hamptons style. The stylish interiors of this two level home compliment the lush leafy outlook, offering the perfect balance of indoor/outdoor living with a wonderful north facing rear garden. Situated within walking distance of local schools, shops and transport.

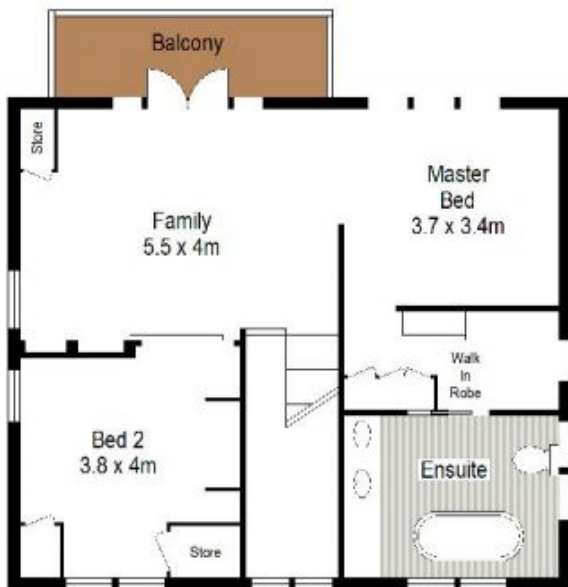
The impressive features of this home include four large bedrooms, separate living and dining rooms bathed in natural light plus an additional family/media room with balcony, beautiful timber flooring, a dream kitchen showcasing a stone island bench, European appliances and casual dining, bi-fold doors open to an expansive north facing garden, undercover deck set amongst manicured

Land Size : 676.6 sqm

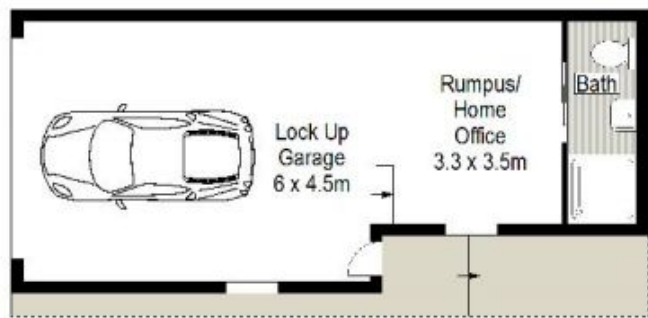
View : <https://www.gibsonpartners.com/sale/nsw/sutherland/caringbah-south/residential/house/5854442>



Chris Walsh
02 9523 1333



FIRST FLOOR



GROUND FLOOR



GROUND FLOOR



SITE PLAN
(NOT TO SCALE)



Gibson Partners Real Estate Pty Ltd

Scale in metres. The above only information is approximate. All information contained herein is gathered from sources we believe to be reliable, however we cannot guarantee its accuracy and therefore persons should rely on their own enquiries.

