



5 Tolol Avenue Miranda NSW

5 3 1

Enviably positioned in a quiet and convenient location, this very presentable home boasts an expansive and functional floor plan packed with potential to personalise with a renovation or rebuild (STCA).

Offering an easy single level lifestyle on a good sized 556sqm block and located within minutes to quality schools, Miranda Westfield & local parks, this home is the complete family package.

- Combined living & dining room + additional lounge room
- Modern galley style kitchen with stainless steel appliances
- Five bedrooms, built-in robes, main with walk-in robe & ensuite
- Three bathrooms, internal laundry & split system air-conditioning

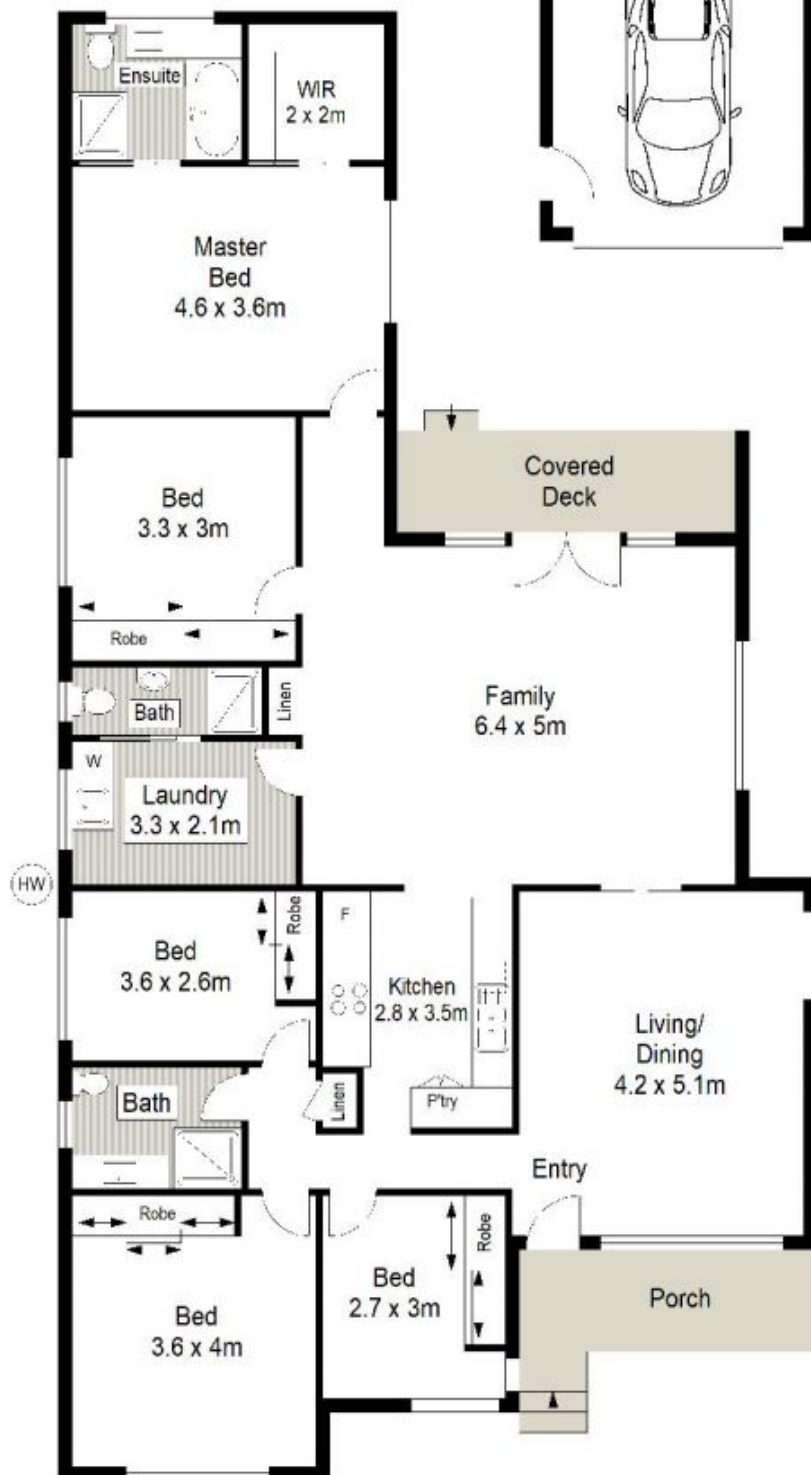
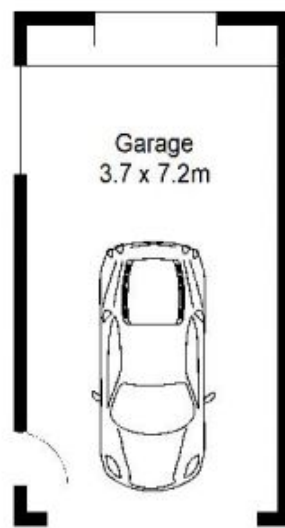
Price : \$ 1,002,500
Land Size : 556.4 sqm
View : <https://www.gibsonpartners.com/sale/nsw/sutherland/miranda/residential/house/5854443>



Chris Walsh
02 9523 1333



Ivan Lampret
02 9523 1333



0 1 2 3 4 5 METRES

Gibson Partners Real Estate Pty Ltd

Scale in metres. The above only dimensions are approximate. All information contained herein is gathered from sources we believe to be reliable, however we cannot guarantee its accuracy and interested persons should rely on their own enquiries.



5 Tolol Avenue, Miranda

GIBSON