



3 Burleigh Avenue Caringbah NSW

3 2 2

Set on a level 562.8sqm parcel of land and boasting a sun-drenched northerly aspect, this charming three bedroom home presents the perfect opportunity for those wanting to enter the market or further develop (STCA) in this sought after family friendly neighbourhood.

Land Size : 562.8 sqm
View : <https://www.gibsonpartners.com/sale/nsw/sutherland/caringbah/residential/house/5854445>

Immediately liveable and boasting renovated interiors, this home also offers a secure well-maintained level yard ideal for the kids to play or entertaining family and friends. Enjoy the convenience of Cronulla beaches, cafes, local schooling and sporting facilities just minutes away.

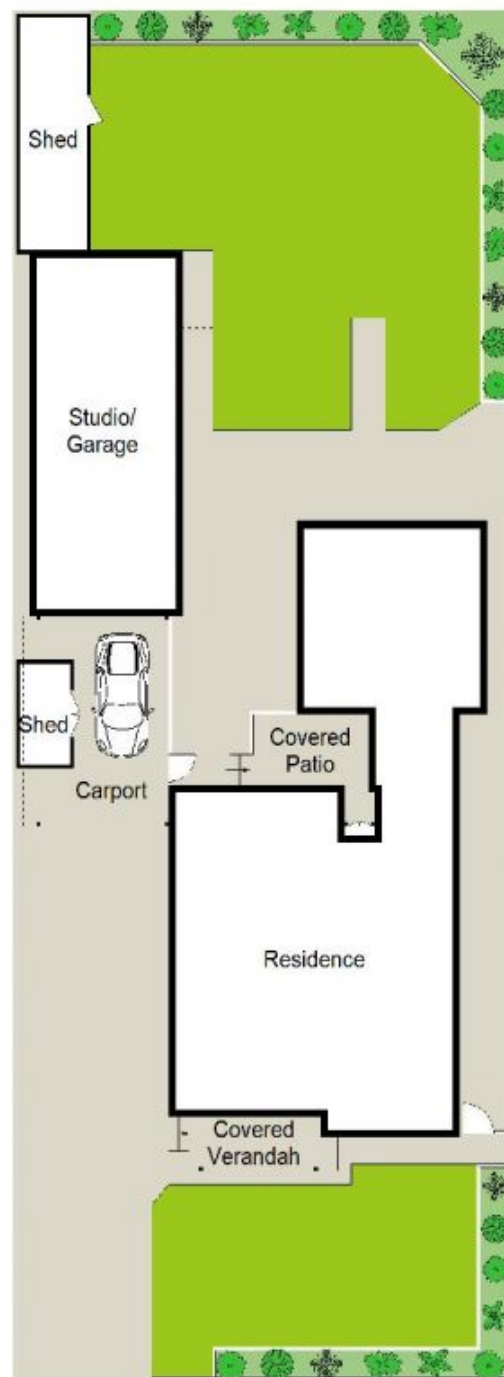
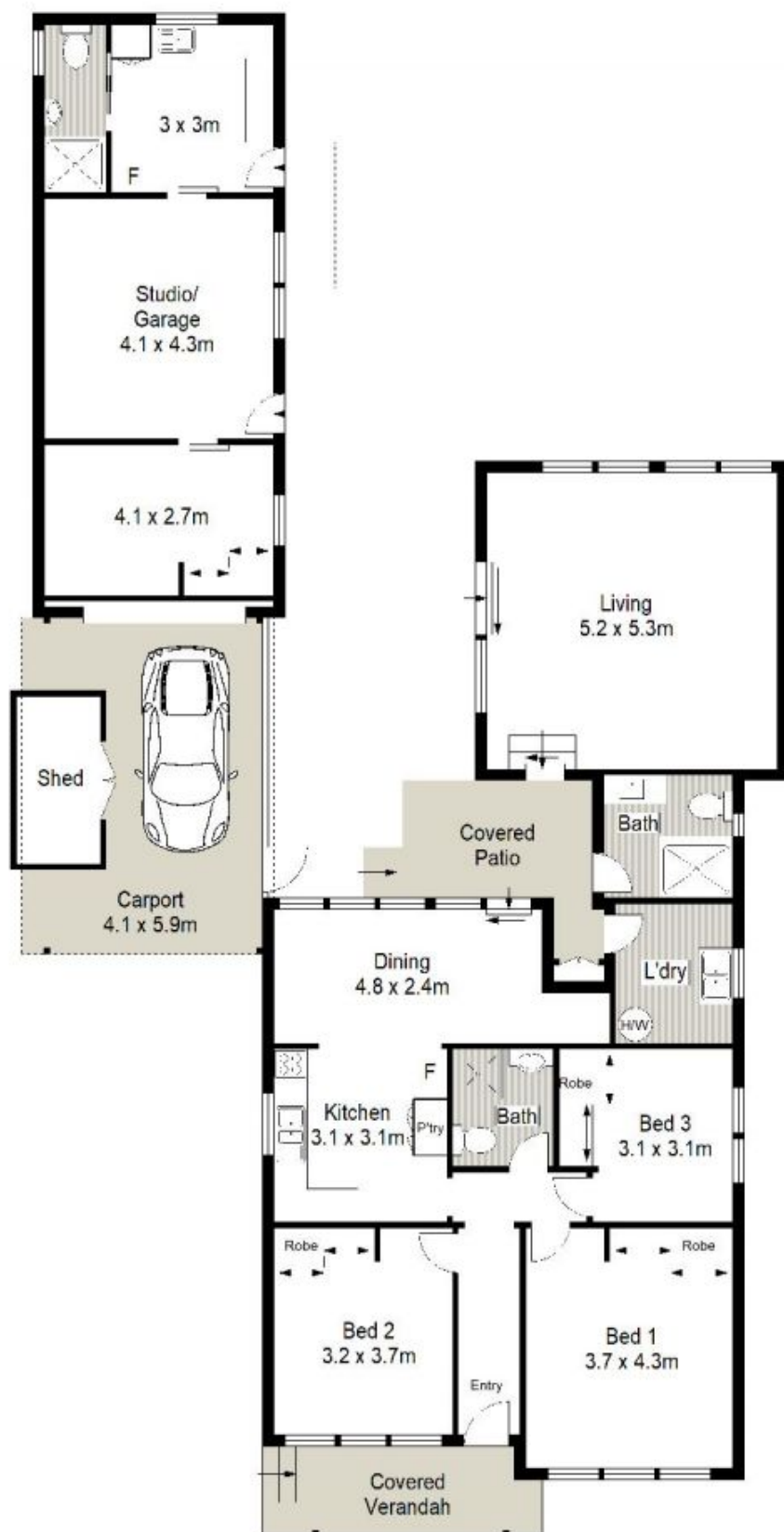
- Separate living & dining rooms overlook the garden
- Three bedrooms fitted with built-in robes & ceiling fans
- Spacious modern kitchen with adjoining dining room
- Two bathrooms, large external laundry, air-conditioning



Ivan Lampret
02 9523 1333



Karla Madgwick
02 9523 1333



SITE PLAN (NOT TO SCALE)

0 1 2 3 4 5 METRES

Gibson Partners Real Estate Pty Ltd

Scale in metres. The above only information is approximate. All information contained herein is gathered from sources we believe to be reliable, however we cannot guarantee its accuracy and interested persons should rely on their own enquiries.



3 Burleigh Avenue, Caringbah

GIBSON