



1 Goobarah Road Burraneer NSW

3 2 2

This charming double brick cottage located in an appealing tree-lined cul-de-sac delivers the perfect lifestyle for those looking to downsize without compromising on space. Situated just minutes to the Royal Motor Yacht Club, local beach with kayak access, shops & transport.

Graced with stylish interiors and quality finishes throughout and featuring a versatile choice of living areas, beautiful porcelain tiled flooring, separate dining, three bedrooms, home office/4th bedroom, designer bathrooms, private landscaped yard boasting a northerly aspect, outdoor shower and cascading water fountains.

- Light-filled formal & informal living rooms with separate dining area
- Gourmet granite kitchen with Miele s/s appliances &

Price : \$ 1,570,000
Land Size : 474.4 sqm
View : <https://www.gibsonpartners.com/sale/nsw/utherland/burraneer/residential/house/5854473>



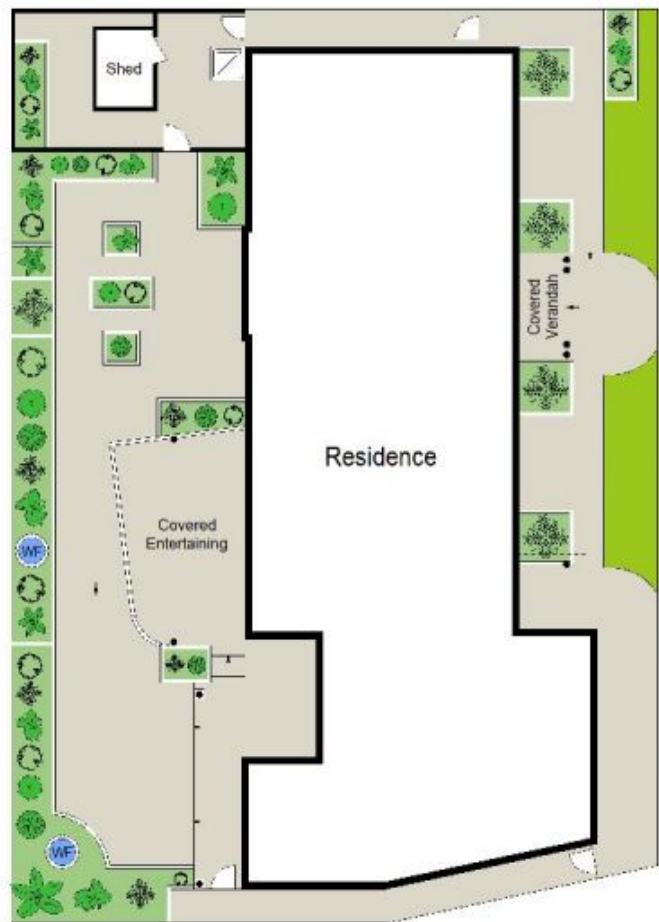
Chris Walsh
02 9523 1333



Ivan Lampret
02 9523 1333



GROUND FLOOR



SITE PLAN (NOT TO SCALE)

0 1 2 3 4 5 SCALE METRES

Gibson Partners Real Estate Pty Ltd

Scale in metres. Dimensions only. Dimensions are approximate. All information contained herein is gathered from sources we believe to be reliable, however we cannot guarantee its accuracy and interested persons should rely on their own enquiries.



1 Goobarah Road, Burraneer

GIBSON