



27 Darryl Place Gymea Bay NSW

3 1 1

Set back from the street in tranquil natural surrounds, this bushland oasis offers immaculate interiors designed to embrace a calm lifestyle setting. Entertain on the outdoor timber deck or simply sit back and relax taking in the lush leafy outlook on hand.

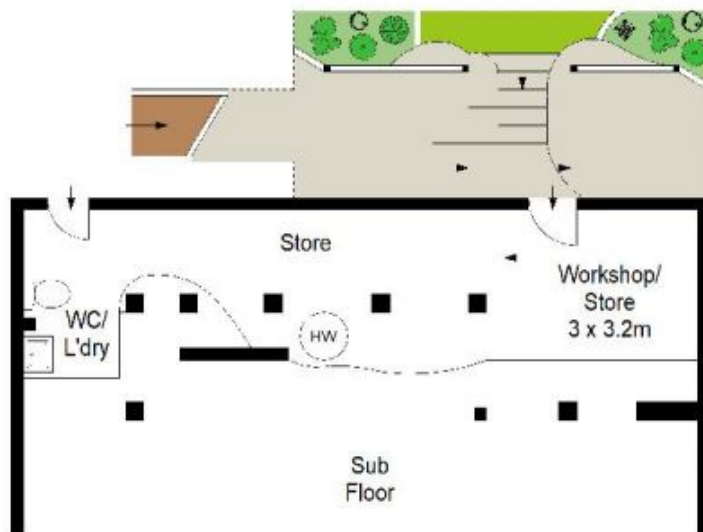
Peaceful and private, this split level home creates a welcoming family environment on an elevated 556sqm parcel of landscaped gardens and lawns with sun-drenched bedrooms and stylishly renovated throughout. Located in the Gymea Bay Public & Kirrawee High school catchment.

- Spacious open-plan living & dining with gorgeous leafy outlook
- Three light-filled bedrooms all appointed with built-in wardrobes

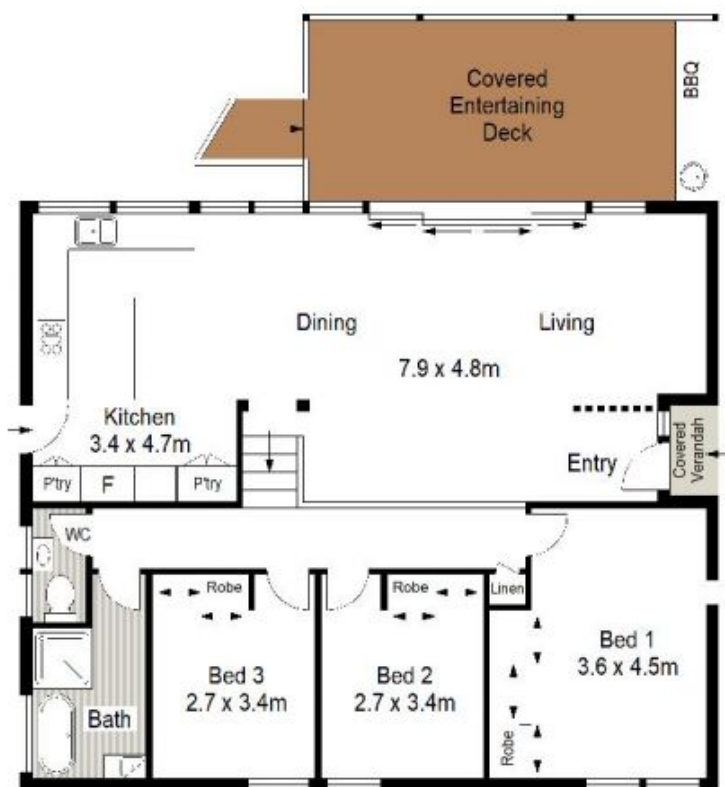
Land Size : 556.4 sqm
View : <https://www.gibsonpartners.com/sale/nsw/sutherland/gymea-bay/residential/house/5854504>



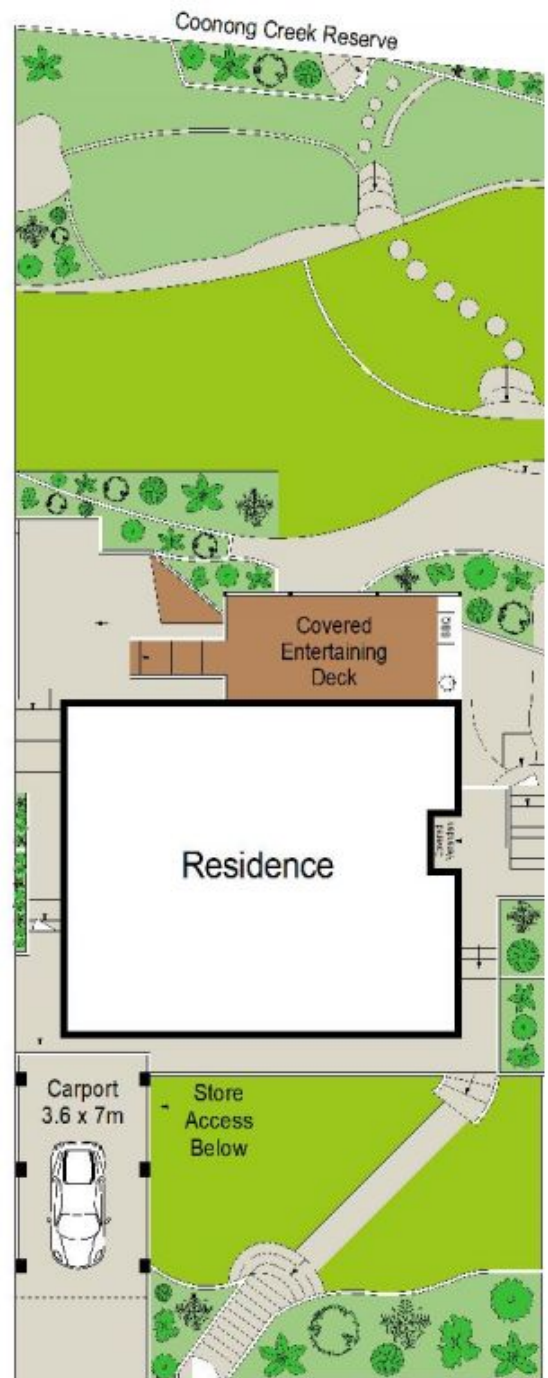
Chris Walsh
02 9523 1333



LOWER GROUND FLOOR



GROUND FLOOR



SITE PLAN (NOT TO SCALE)

0 1 2 3 4 5
SCALE IN METRES

Gibson Partners Real Estate Pty Ltd

Scale in metres. The above only. Dimensions are approximate. All information contained herein is gathered from sources we believe to be reliable, however we cannot guarantee its accuracy and interested persons should rely on their own enquiries.

