



## 13A San Remo Avenue Gymea NSW

4 3 1

Occupying an elevated street presence and enjoying district views, the home boasts sumptuous interiors with a long list of luxury features. Located in a prime location with the added convenience of only being minutes away from Gymea Village shops, cafes, restaurants, transport and local schools.

Streaming with natural light and an abundance of space, this brand new architecturally designed home showcases chic designer finishes, stunning high ceilings and a sensational floorplan providing a sense of comfort and style with a seamlessly integrated indoor/outdoor flow ideal for hosting family and friends.

- Open plan living & dining space with additional family/rumpus room

**Land Size** : 366.8 sqm

**View** : <https://www.gibsonpartners.com/sale/nsw/sutherland/gymea/residential/semi-detached/5854585>



**Briolynn Kennedy**  
02 9523 1333



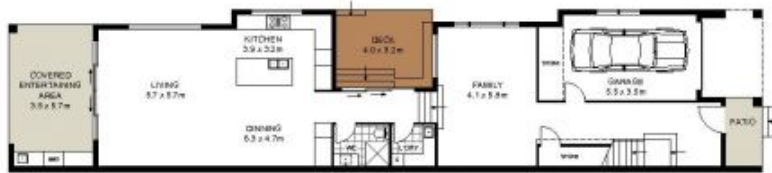
**Ivan Lampret**  
02 9523 1333



SITE PLAN (NOT TO SCALE)



FIRST FLOOR



GROUND FLOOR

0 1 2 3 4 5 METRES



Gibson Partners Real Estate Pty Ltd

Scale in meters. Indicative only. Dimensions are approximate. All information contained herein is gathered from sources we believe to be reliable. However we cannot guarantee its accuracy and interested persons should rely on their own enquiries.

13A SAN REMO AVE, GYMEA

**GIBSON**