

## 8 Mirral Road Caringbah South NSW

6 3 2

Offering a generous 910sqm parcel of land and presenting an exciting opportunity for savvy buyers to capitalise on this fantastic Caringbah South location. With the original home at the rear and a second smaller house at the front the potential and options are endless.

Suitable for dual family living, in-law accommodation or an investment opportunity this property is a must to inspect and all within minutes to local schools, shops, transport and Lilli Pilli baths.

Rear Home:-

- Formal and informal living, dining & family rooms
- 4 bedrooms with built-in robes, master with ensuite
- Granite kitchen with breakfast bar & servery window

**Price** : \$ 1,575,000

**Land Size** : 910.5 sqm

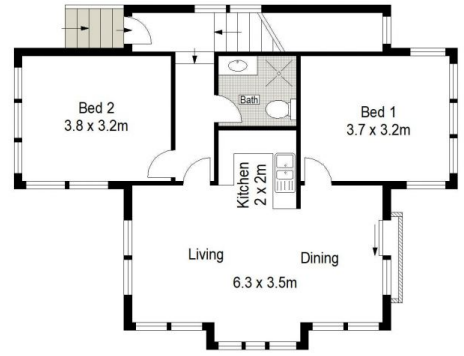
**View** : <https://www.gibsonpartners.com/sale/nsw/sutherland/caringbah-south/residential/house/5854667>



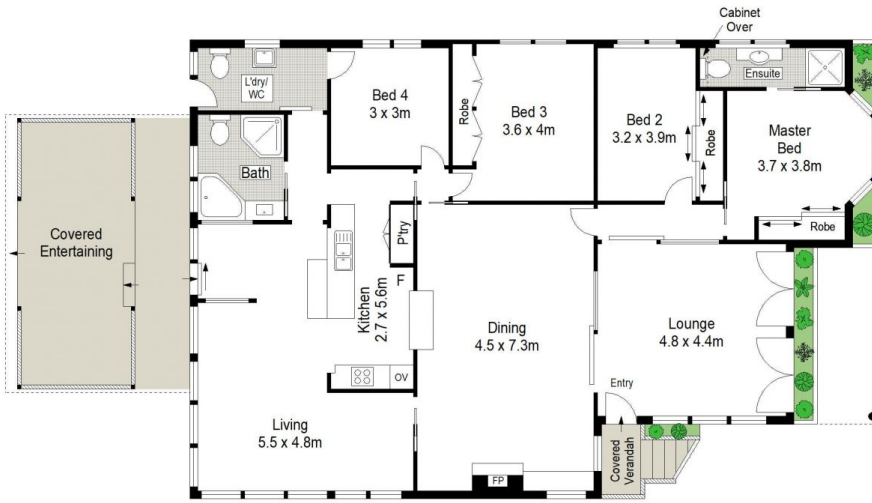
**John Young**  
02 9523 1333



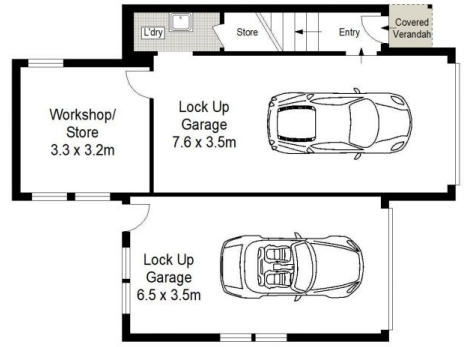
SITE PLAN (NOT TO SCALE)



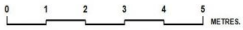
GROUND FLOOR



GROUND FLOOR



LOWER GROUND FLOOR



Gibson Partners Real Estate Pty Ltd

Scale in metres. Indicative only. Dimensions are approximate. All information contained herein is gathered from sources we believe to be reliable. However we cannot guarantee its accuracy and interested persons should rely on their own enquiries.



8 Mirral Road, Caringbah South

**GIBSON**