



13 John Street Cronulla NSW

5 2 2

Inspired by its relaxing coastal surrounds and sought after South Cronulla address, this impeccable family home reveals a superb fusion of space, style and contemporary comfort. Spanning two impressive levels and designed for effortless indoor/outdoor functionality, it offers a versatile choice of light filled open plan living spaces and alfresco entertaining overlooking the level lawn and sparkling inground pool and spa.

Surrounded by manicured gardens and boasting dual street frontage from John Street & Coronation Avenue, this is an exceptional offering in an enviable locale within mere moments to Shelly Park & Beach, The Nuns Pool, The Esplanade, local schools, cafes and transport.

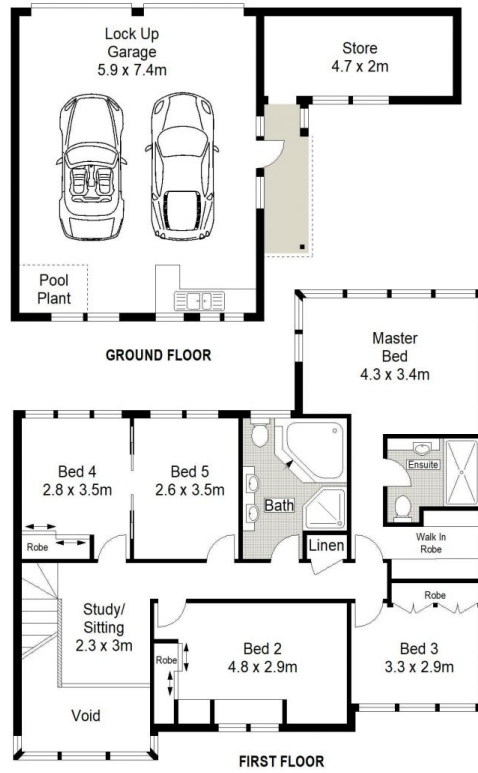
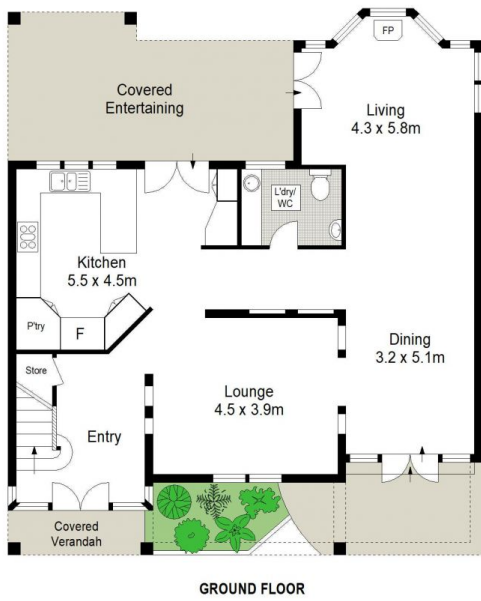
Land Size : 563 sqm
View : <https://www.gibsonpartners.com/sale/nsw/sutherland/cronulla/residential/house/5854671>



Ivan Lampret
02 9523 1333



Karla Madgwick
02 9523 1333



0 1 2 3 4 5 METRES.

Gibson Partners Real Estate Pty Ltd

Scale in metres. Indicative only. Dimensions are approximate. All information contained herein is gathered from sources we believe to be reliable. However we cannot guarantee its accuracy and interested persons should rely on their own enquiries.

13 John Street, Cronulla South

GIBSON