



6-8 Willarong Road Caringbah NSW

5 3 8

Presented to the market for the first time, is a unique and rare opportunity to acquire a 5 bedroom brick family home and factory/workshop that is spread over two separate lots and occupies approximately 1300sqm of land.

Beaming with potential and future prospects, this offering would be attractive to the astute investor, builders, developers, and the savvy home business owner. Located within the Sutherland Shire's highly sought-after industrial precinct of Caringbah surrounded by Bunnings, Nick Scali, OMF, Petbarn, and the Caringbah Supa Centre.

- Present use is a 5 bedroom family residence & joinery factory
- Grand spacious interiors, 4 living areas, A/C, galley style

Land Size : 1300 sqm

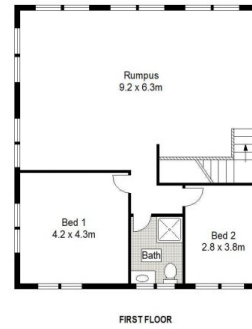
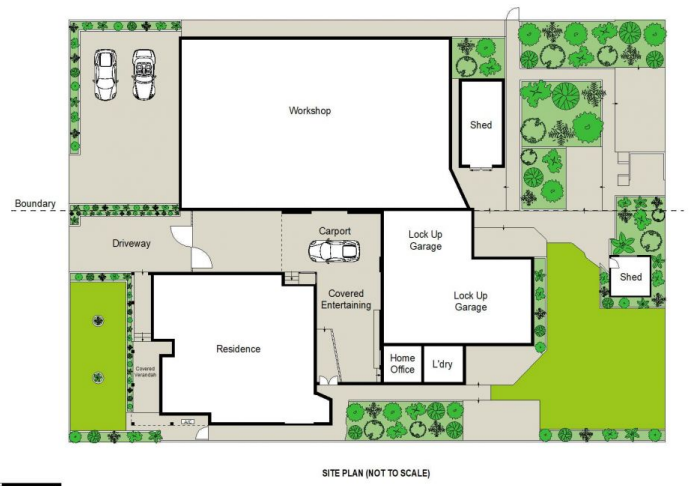
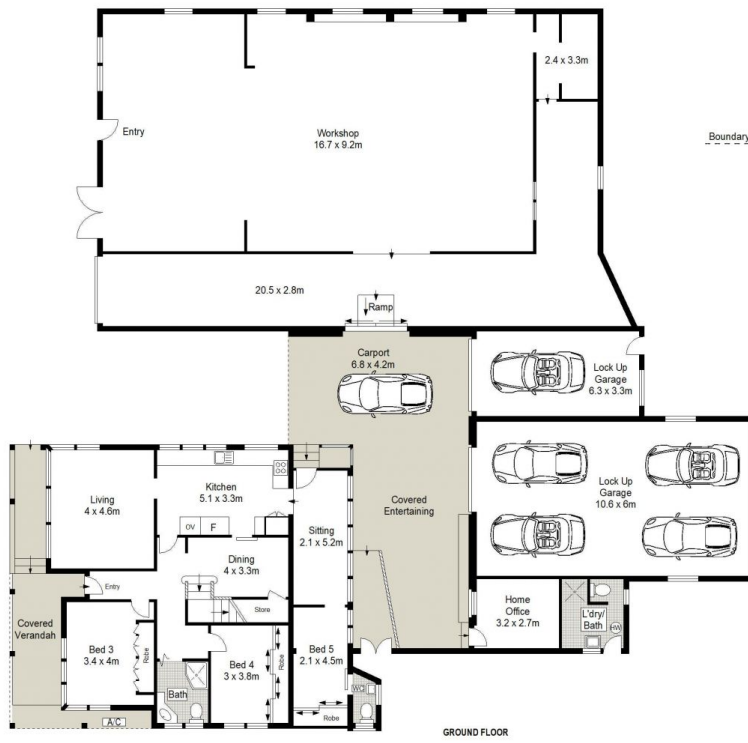
View : <https://www.gibsonpartners.com/sale/nsw/sutherland/caringbah/residential/house/5854748>



Ivan Lampret
02 9523 1333



Karla Madgwick
02 9523 1333



Gibson Partners Real Estate Pty Ltd
Scale in metres. Indicative only. Dimensions are approximate. All information contained herein is gathered from sources we believe to be reliable. However we cannot guarantee its accuracy and interested persons should rely on their own enquiries.

6-8 Willarong Road, Caringbah



GIBSON