



25 Lynch Avenue CARINGBAH NSW

4 3 2

A one owner 2 storey family home set on a level 569sq mt block offers an opportunity for a discerning buyer to secure an immaculate prestige home in one of south Caringbahs most popular streets, within walking distance to schools, shops and sporting fields.

Upstairs there are four large bedrooms, all with built-ins, the master features a double ensuite and walk in robe. There's also a second living area with an adjoining balcony offering pleasant district and sunset views.

The downstairs living areas are blessed by all day sun, and adjoins a formal dining room and separate study, which could easily convert to a 5th bedroom. The premium Australian spotted-gum floors and stairwell make an impression as soon as you enter, as do the high ceilings.

The spacious open-plan living area & gas kitchen flows to a level north facing hard wood all weather covered

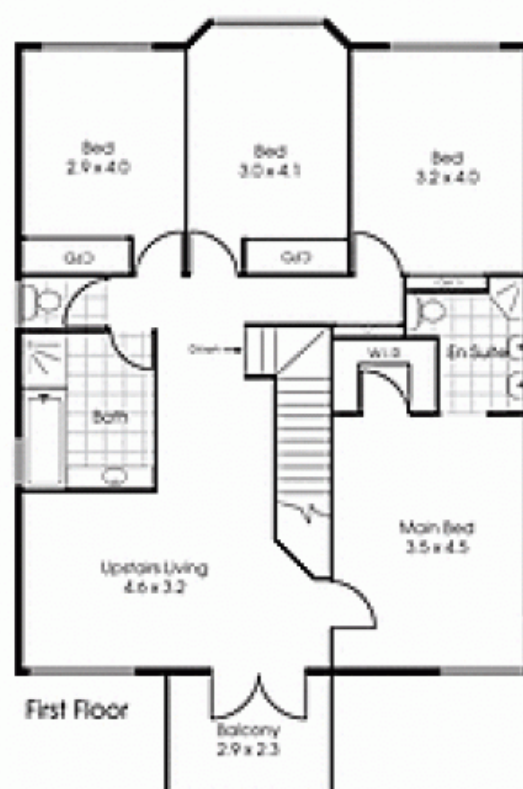
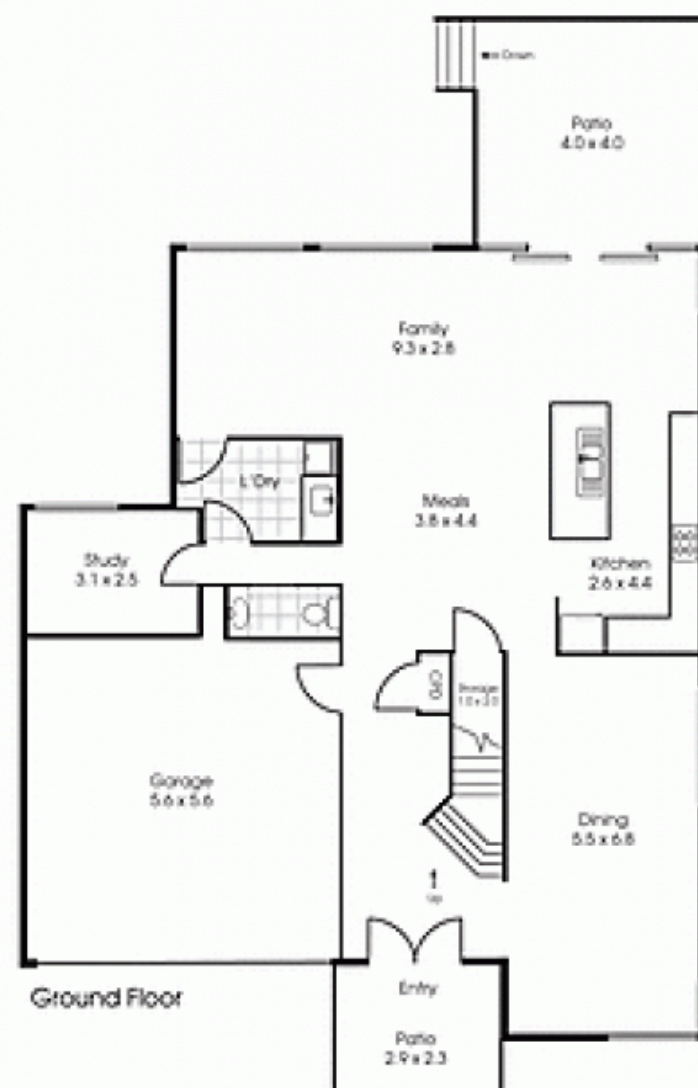
View : <https://www.gibsonpartners.com/sale/nsw/sutherland/caringbah/residential/house/5854785>



Denise Howell
02 9523 1333

Caringbah

25 Lynch Ave



Please note: all stated dimensions are approximate only. Particulars given are for general information only and do not constitute any representation on the part of the vendor or agent.