



1/8 Searl Road Cronulla NSW

2 1

Situated at the rear of a boutique complex of only four, this ground floor apartment has no common walls and stands out from the rest with its practical layout and tranquil setting.

Located in a super convenient and central position within a short stroll to Gunnamatta Bay, Cronulla Mall, cafes, restaurants and transport, an ideal first home or investment.

- Set at the rear of a boutique complex of four
- No common walls, high ceilings throughout
- Combined living & dining leads to the outdoors
- Two large bedrooms feature built-in wardrobes
- Neat bathroom, external laundry & rear patio

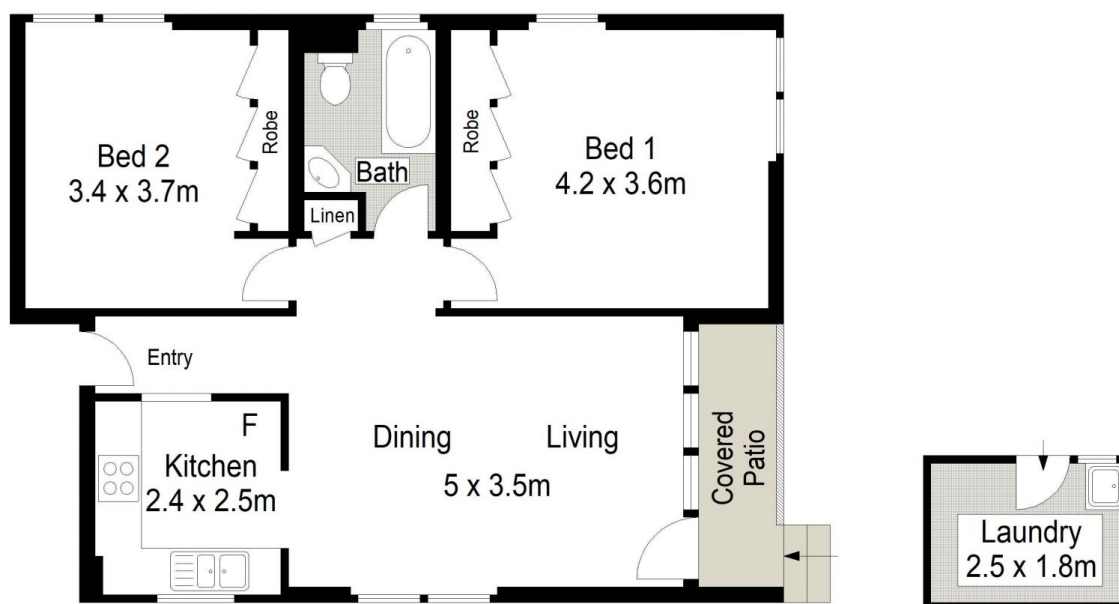
View : <https://www.gibsonpartners.com/sale/nsw/sutherland/cronulla/residential/unit/5854932>



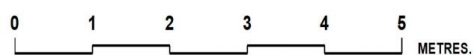
Ivan Lampret
02 9523 1333



Farrah Tidmarsh
02 9523 1333



GROUND FLOOR



Gibson Partners Real Estate Pty Ltd

Scale in metres. Indicative only. Dimensions are approximate. All information contained herein is gathered from sources we believe to be reliable. However we cannot guarantee its accuracy and interested persons should rely on their own enquiries.



1/8 Searl Road, Cronulla

GIBSON