



10/199 The Kingsway Woollooware NSW

3 2 2

Peacefully positioned at the back of a boutique development and finished to an uncompromising standard, this architecturally designed SOHO Terrace fuses contemporary design with relaxed low maintenance living. Intuitively crafted to embrace the northerly aspect, sleek living spaces extend directly to an alfresco entertaining deck with outdoor kitchen and spa.

Conveniently located close to local parks and Woollooware train station and within just a few minutes' drive to Cronulla Beach, Mall, cafes and restaurants.

- Situated at the back of a boutique development of only eleven
- Alfresco entertaining with auto vergola, outdoor kitchen & spa

Price : \$ 1,250,000

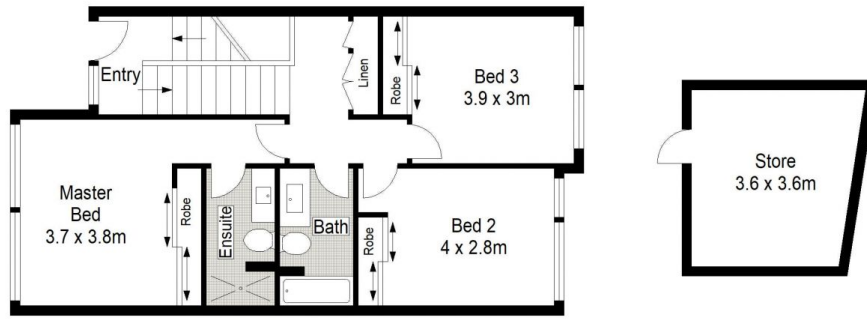
View : <https://www.gibsonpartners.com/sale/nsw/sutherland/woollooware/residential/townhouse/5854965>



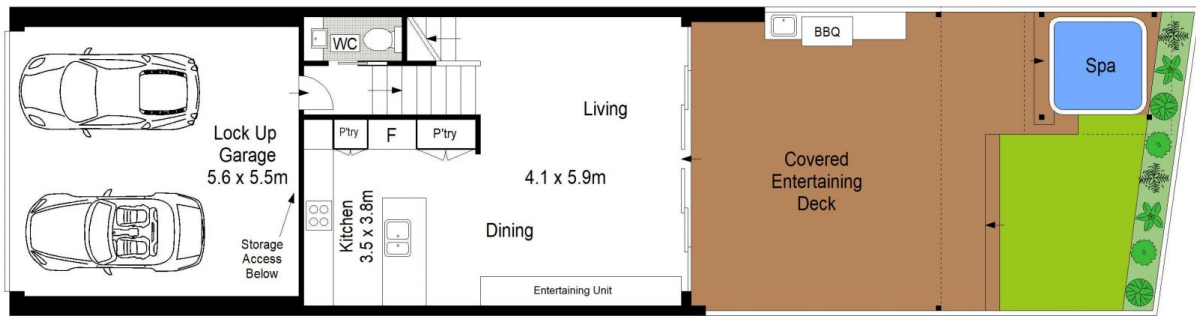
Ivan Lampret
02 9523 1333



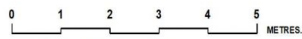
Farrah Tidmarsh
02 9523 1333



FIRST FLOOR



GROUND FLOOR



Gibson Partners Real Estate Pty Ltd

Scale in metres. Indicative only. Dimensions are approximate. All information contained herein is gathered from sources we believe to be reliable. However we cannot guarantee its accuracy and interested persons should rely on their own enquiries.



10/199 Kingsway, Woollooware

GIBSON