



1/5 Vernon Avenue Gymea Bay NSW

4 2 2

Privately set back from the street and offering a lush leafy outlook this dual level home is perfect for the keen renovator to restore its spacious interiors and benefit from this fantastic Gymea Bay location.

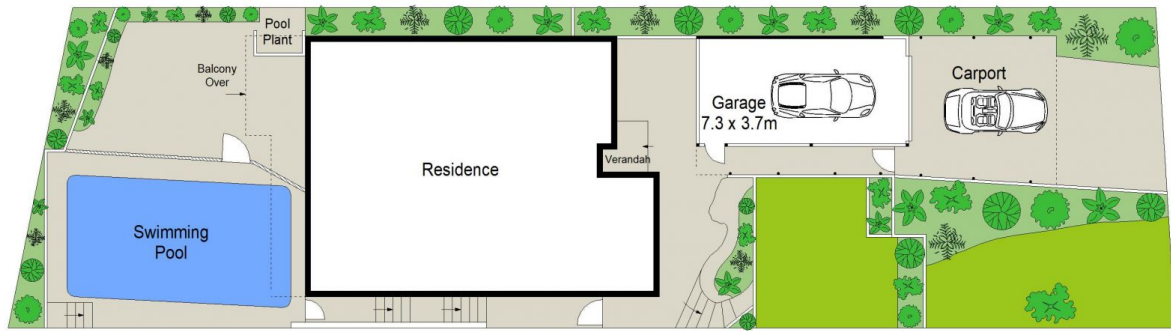
Generous interiors feature ample living spaces and accommodation, while the outdoor entertaining area overlooks a family sized in-ground pool. Within minutes to schools, shops, transport and a pleasant stroll to Gymea Bay Baths.

- Combined living & dining room opens out to the rear balcony
- Neat kitchen with stainless steel appliances & ample storage
- 3 bedrooms feature built-in wardrobes, main with balcony

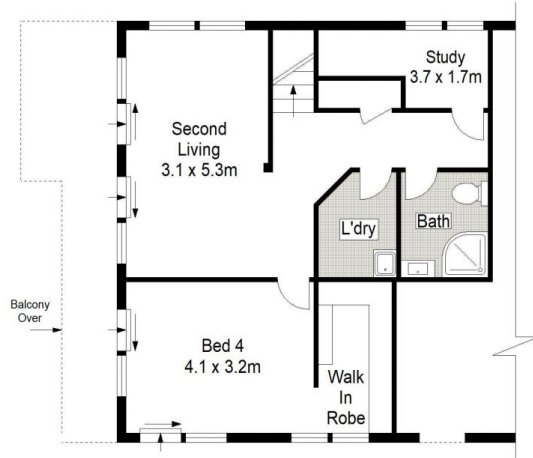
Price : \$ 1,030,000
Land Size : 416 sqm
View : <https://www.gibsonpartners.com/sale/nsw/sutherland/gymea-bay/residential/house/5855007>



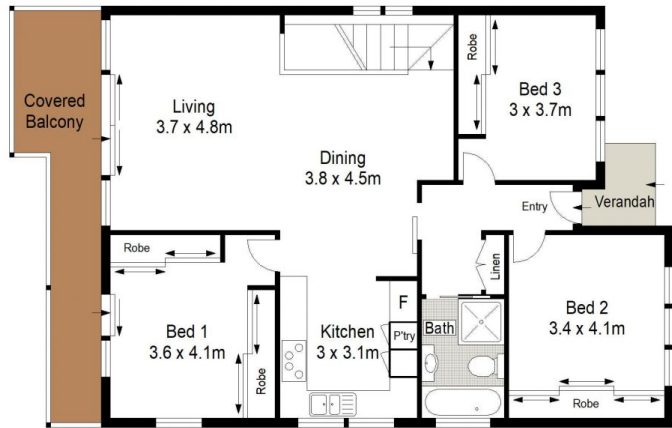
Chris Walsh
02 9523 1333



SITE PLAN (NOT TO SCALE)



LOWER GROUND FLOOR



GROUND FLOOR

0 1 2 3 4 5 METRES

Gibson Partners Real Estate Pty Ltd

Scale in metres. Indicative only. Dimensions are approximate. All information contained herein is gathered from sources we believe to be reliable. However we cannot guarantee its accuracy and interested persons should rely on their own enquiries.



5 Vernon Avenue, Gymea Bay

GIBSON