



45/1-9 Warburton Street Gymea NSW

3 2 2

Located in the heart of Gymea, this North facing three bedroom Townhouse offers a low-maintenance carefree retreat for downsizers or families set in a ultra-convenient location with an easy level stroll to Gymea Village, Hazelhurst Gardens and transport.

Price : \$ 715,000

View : <https://www.gibsonpartners.com/sale/nsw/sutherland/gymea/residential/townhouse/5855035>

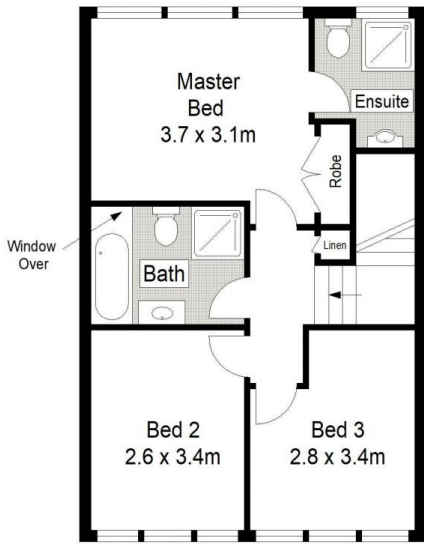
****Enter via Warburton Street or Kingsway****

- Combined living & dining room opens to the outdoors
- Three bedrooms, main with built-in wardrobe & ensuite
- Stylish modern kitchen features s/steel appliances
- Neat bathroom & internal laundry with additional WC
- Front & rear courtyards & secure double lock-up garage

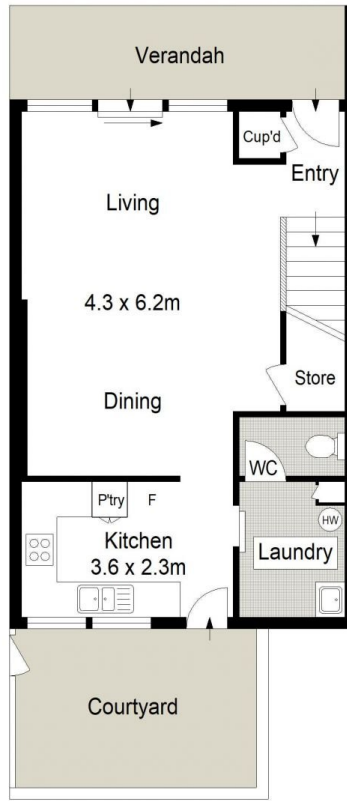
Size: 179sqm + 40sqm (approx)
Denise Howell 0418 117 876



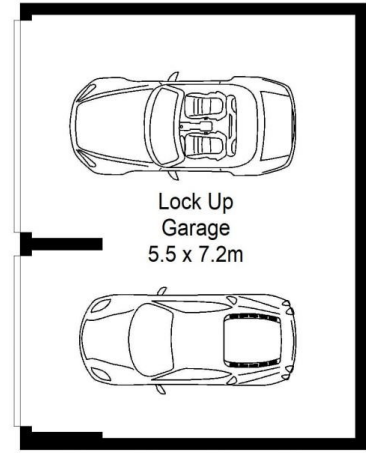
Denise Howell
02 9523 1333



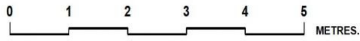
FIRST FLOOR



GROUND FLOOR



BASEMENT



Gibson Partners Real Estate Pty Ltd

Scale in metres. Indicative only. Dimensions are approximate. All information contained herein is gathered from sources we believe to be reliable. However we cannot guarantee its accuracy and interested persons should rely on their own enquiries.



45/1-9 Warburton Street, Gymea

GIBSON