



## 30A Loraine Avenue Caringbah South NSW

3 3 2

Striking from the outside and stunning from within, this full brick Torrens Title duplex showcases a tasteful fusion of contemporary architecture and premium inclusions. Designed to embrace natural sunlight with high ceilings, free flowing living areas and glass sliders that integrate seamlessly with a generous courtyard and covered entertaining.

Positioned on the high side of a quiet street in Caringbah South with elevated views of The Port Hacking River, this remarkable home is conveniently placed within moments to Lilli Pilli Oval, waterways, village shops, schools and transport.

- Full brick construction, high end inclusions, free flowing interiors

**Land Size** : 290.4 sqm  
**View** : <https://www.gibsonpartners.com/sale/nsw/sutherland/caringbah-south/residential/semi-detached/5855041>



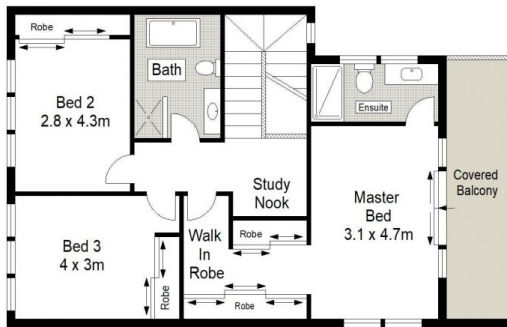
**Ivan Lampret**  
02 9523 1333



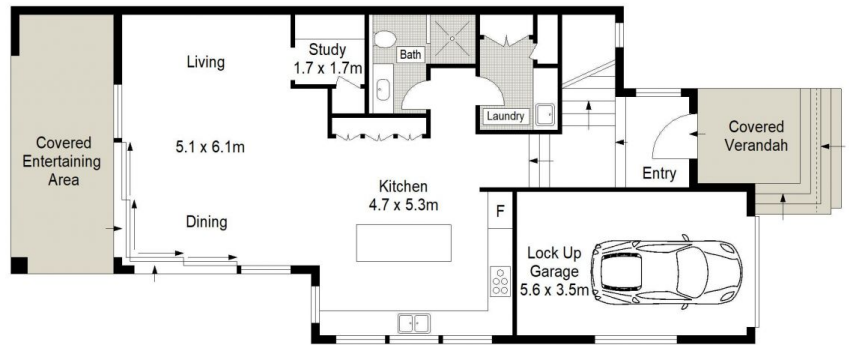
**Karla Madgwick**  
02 9523 1333



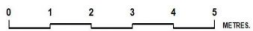
SITE PLAN (NOT TO SCALE)



FIRST FLOOR



GROUND FLOOR



Gibson Partners Real Estate Pty Ltd

Scale in metres. Indicative only. Dimensions are approximate. All information contained herein is gathered from sources we believe to be reliable. However we cannot guarantee its accuracy and interested persons should rely on their own enquiries.



30A Loraine Avenue, Caringbah South

**GIBSON**