



2/23-25 Fontainebleau Street Sans Souci NSW

2 1 2

Showcasing a bright open-plan design embraced by picture-perfect white interiors, this immaculately presented Villa offers elegant contemporary finishes complimented by polished timber flooring, offering the perfect balance of indoor/outdoor living amidst a private tranquil oasis.

**Price** : \$ 885,000

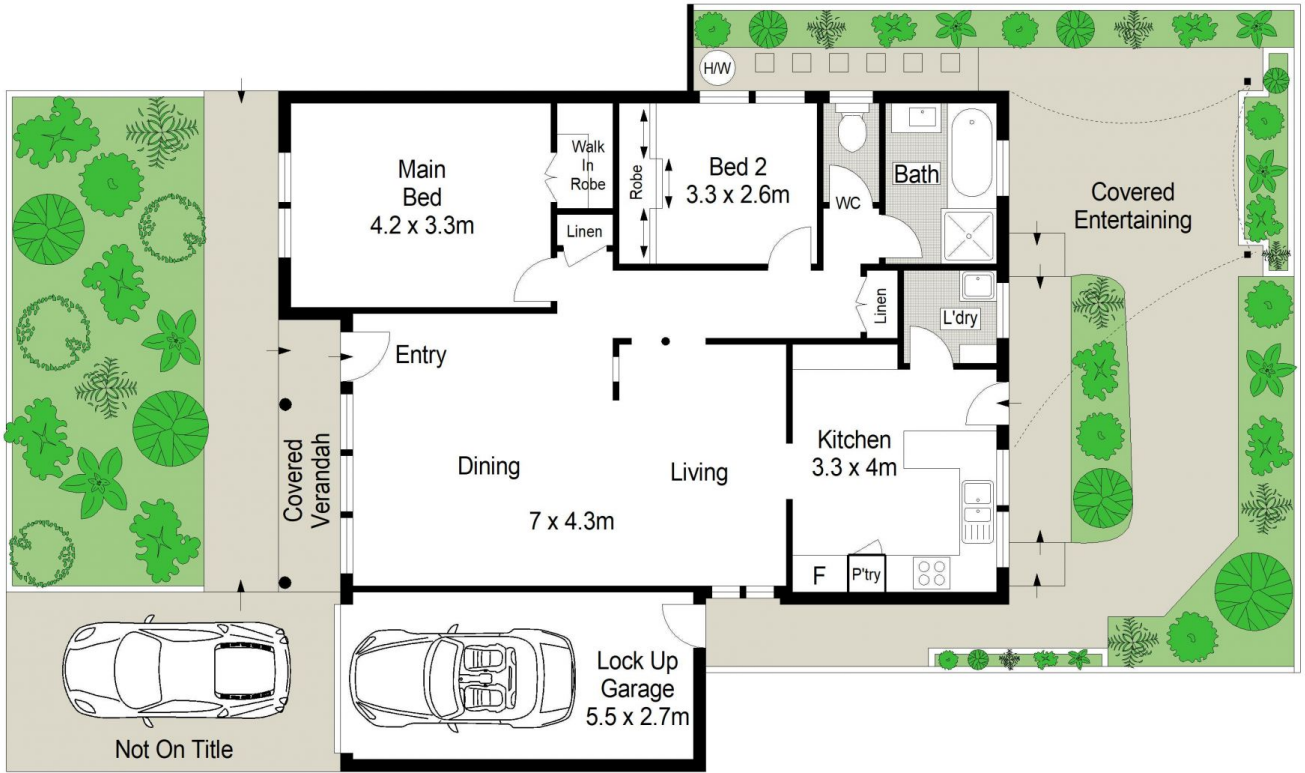
**View** : <https://www.gibsonpartners.com/sale/nsw/st-george/sans-souci/residential/villa/5855043>

Situated in a sought-after location within a well-maintained pet friendly complex, this rare treasure is perfect for those looking to down size without compromising on space. Take a leisurely stroll to cafes, parks and white sandy beaches or jump on the bus directly out the front.

- An elegant open-plan design combines both living & dining rooms
- Two bedrooms with ceiling fans & BIRs, master with split system A/C



**Justin Buck**  
02 9523 1333



0 1 2 3 4 5 METRES.

Gibson Partners Real Estate Pty Ltd

Scale in metres. Indicative only. Dimensions are approximate. All information contained herein is gathered from sources we believe to be reliable. However we cannot guarantee its accuracy and interested persons should rely on their own enquiries.



2/23-25 Fontainebleau Street, Sans Souci

**GIBSON**