



7 Plover Street Grays Point NSW

4 3 1

Step inside this flawlessly presented and substantial family home to discover a gracious blend of sophisticated contemporary interiors of soaring ceilings, dual living areas, generous accommodation options and idyllic landscaped gardens.

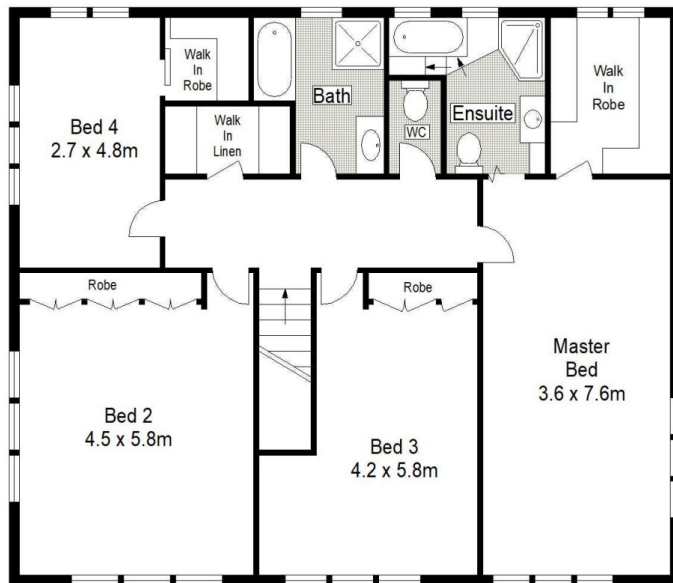
Slightly elevated from the street and offering a lush leafy outlook, the home sits proudly on a 556.4sqm block in a desired pocket of Grays Point presenting the ideal requirements of quality and refined comfort for all your family needs.

- Flowing layout provides a selection of versatile living & dining zones
- Country inspired island kitchen with s/s appliances & walk-in pantry

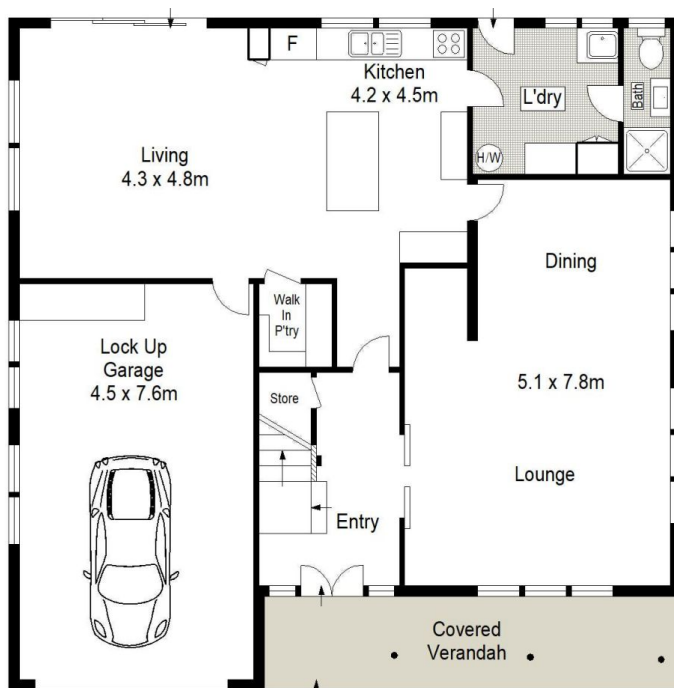
Land Size : 556.4 sqm
View : <https://www.gibsonpartners.com/sale/nsw/sutherland/grays-point/residential/house/5855102>



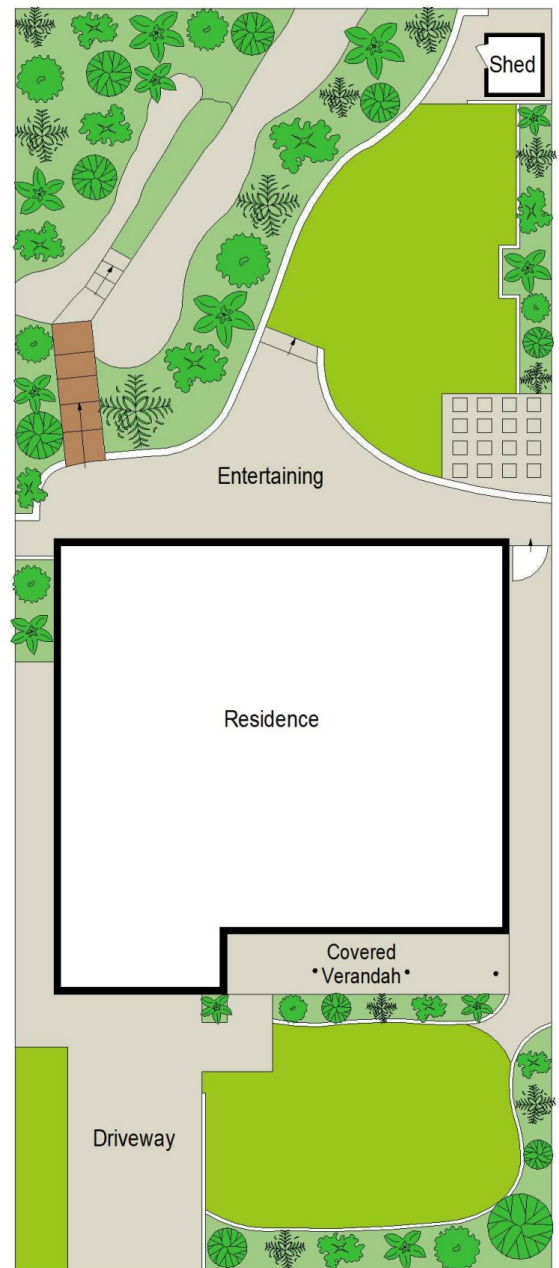
Chris Walsh
02 9523 1333



FIRST FLOOR



GROUND FLOOR



SITE PLAN (NOT TO SCALE)



Gibson Partners Real Estate Pty Ltd

Scale in metres. Indicative only. Dimensions are approximate. All information contained herein is gathered from sources we believe to be reliable. However we cannot guarantee its accuracy and interested persons should rely on their own enquiries.



7 Plover Street, Grays Point

GIBSON