



5 Orient Ave Cronulla NSW

4 3 2

Presenting an unrivalled lifestyle opportunity, placed within metres of the Esplanade, Shelly & Oak Parks, beaches and ocean pools, this substantial family home also embraces glistening water views from a high set position in one of Cronulla's premier waterside cul-de-sacs.

Land Size : 506 sqm
View : <https://www.gibsonpartners.com/sale/nsw/sutherland/cronulla/residential/house/5855105>

The abundance of natural light, sea breezes and exquisite in/outdoor flow rest at the heart of its design with sprawling open-plan living spaces and seamless connections to tranquil entertaining balconies or terraces throughout. The low maintenance surrounds, northerly aspect and sparkling inground pool complete the picture and ensure relaxed family living is of the highest priority.

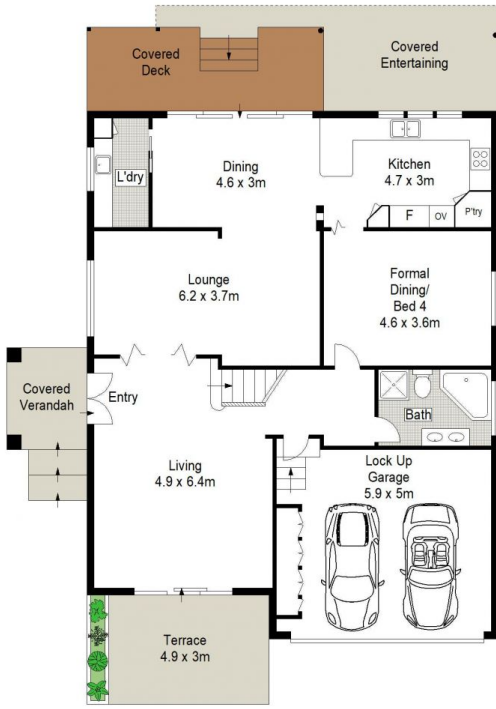
- Beautiful high set beach & ocean views, desirable north



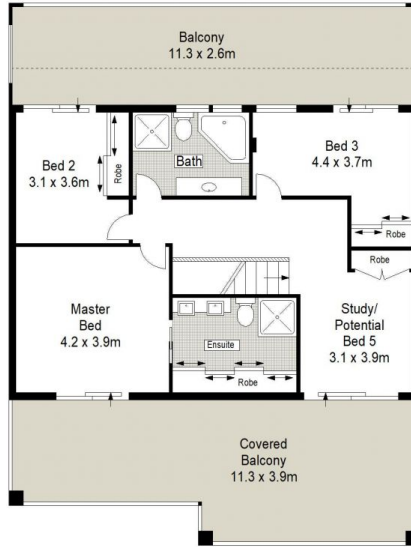
Ivan Lampret
02 9523 1333



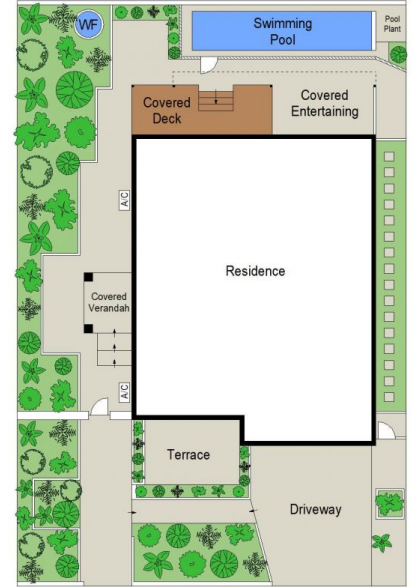
Karla Madgwick
02 9523 1333



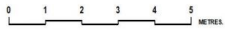
GROUND FLOOR



FIRST FLOOR



SITE PLAN (NOT TO SCALE)



Gibson Partners Real Estate Pty Ltd

Scale in metres. Indicative only. Dimensions are approximate. All information contained herein is gathered from sources we believe to be reliable. However we cannot guarantee its accuracy and interested persons should rely on their own enquiries.



1/5 Orient Avenue, Cronulla South

GIBSON