



## 30 Whitewood Place Caringbah South NSW

4 3 2

Peacefully located in one of Caringbah South's most sought after cul de sacs and graced with a glorious sunny aspect, this substantial family residence will hold immense appeal for those looking for space, style and easy living in a highly convenient setting just moments from local shops, transport, parklands and quality schools.

Spread over two generous levels offering a versatile choice of living and entertaining options, this immaculately presented brick residence is ready for immediate enjoyment.

- Sunny aspect, generous light filled interiors, open plan layout
- Caesarstone island kitchen fitted with Bosch appliances
- 4 spacious bedrooms upstairs with BIRs, ensuite to main

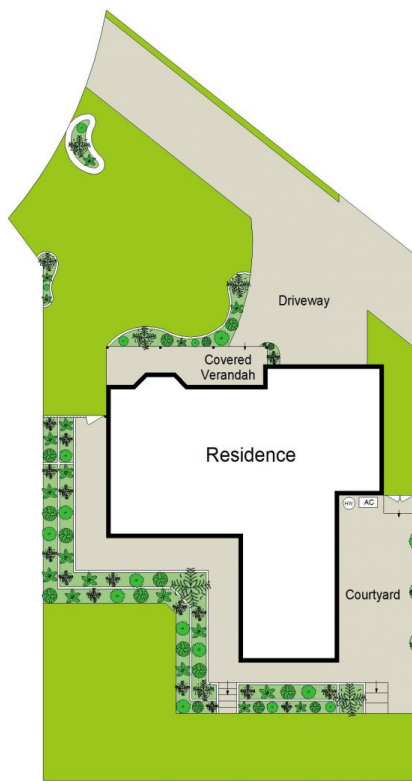
**Land Size** : 605 sqm  
**View** : <https://www.gibsonpartners.com/sale/nsw/sutherland/caringbah-south/residential/house/5855134>



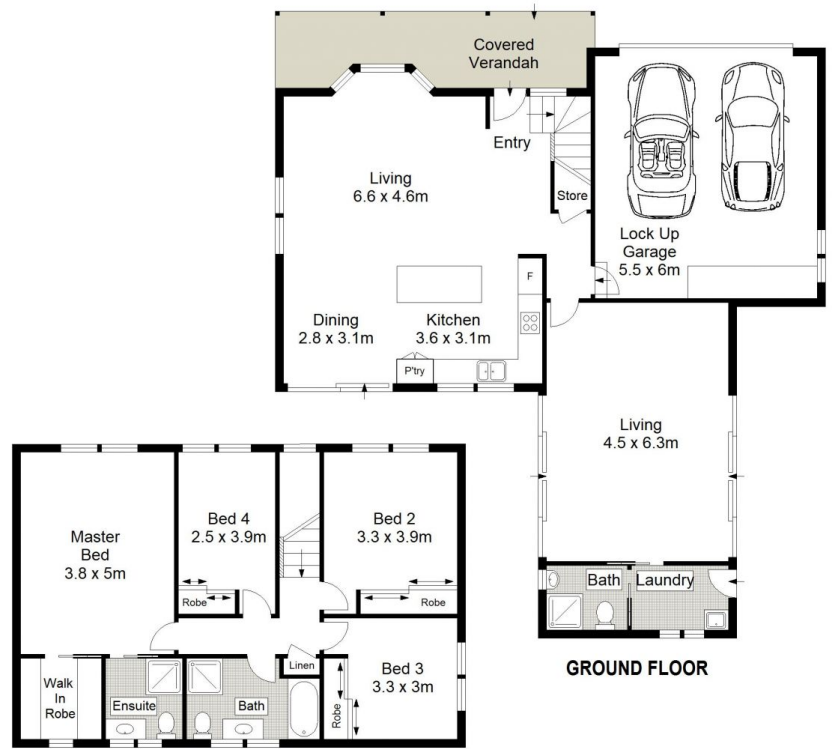
**Ivan Lampret**  
02 9523 1333



**Karla Madgwick**  
02 9523 1333



**SITE PLAN (NOT TO SCALE)**



**FIRST FLOOR**

0 1 2 3 4 5 METRES.

Gibson Partners Real Estate Pty Ltd

Scale in metres. Indicative only. Dimensions are approximate. All information contained herein is gathered from sources we believe to be reliable. However we cannot guarantee its accuracy and interested persons should rely on their own enquiries.



30 Whitewood Place, Caringbah South

**GIBSON**