



## 2/25 Ellesmere Road Gymea Bay NSW

3 1 2

This impressive split-level residence presenting plenty of street appeal has been thoughtfully designed to capture the sunny North East aspect complimented by a lush leafy outlook and peaceful surrounds.

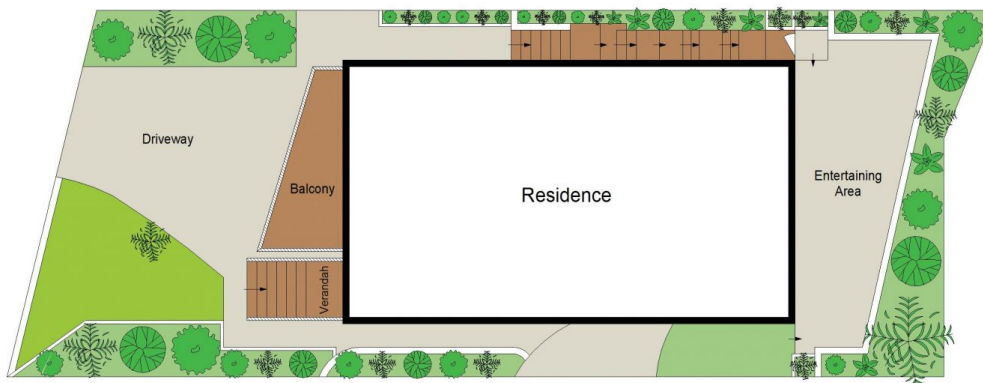
Flawless in its presentation throughout, each level is navigated with ease offering a versatile layout with an emphasis on low-maintenance living without compromising on space. Within minutes to schools, shops, transport and a leisurely stroll through to the beautiful tidal baths of Gymea Bay.

- Light-filled living room leads out to a sunny balcony with a leafy outlook
- Modern gas kitchen with s/steel appliances & movable island bench

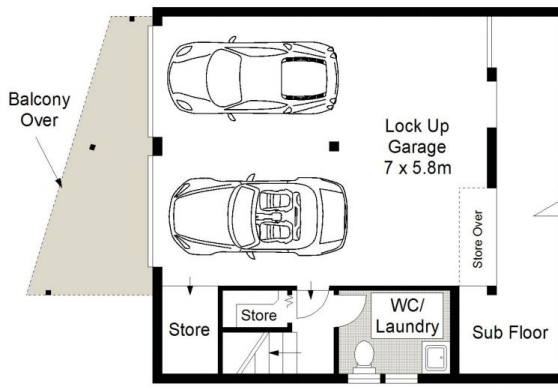
**Price** : \$ 1,210,000  
**Land Size** : 299 sqm  
**View** : <https://www.gibsonpartners.com/sale/nsw/utherland/gymea-bay/residential/house/5855178>



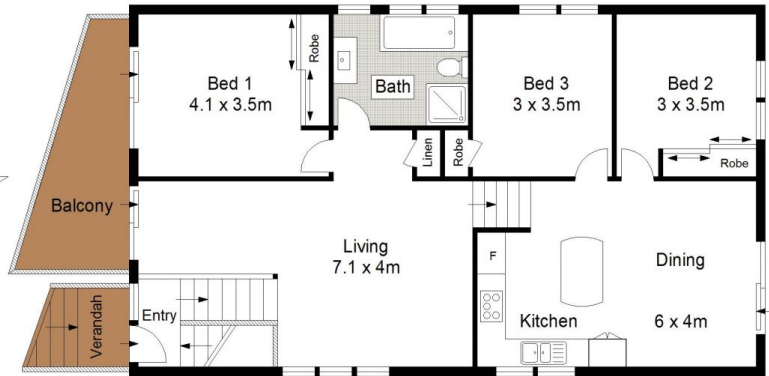
**Chris Walsh**  
02 9523 1333



SITE PLAN (NOT TO SCALE)



LOWER GROUND FLOOR



GROUND FLOOR

0 1 2 3 4 5 METRES.

Gibson Partners Real Estate Pty Ltd

Scale in metres. Indicative only. Dimensions are approximate. All information contained herein is gathered from sources we believe to be reliable. However we cannot guarantee its accuracy and interested persons should rely on their own enquiries.



25 Ellesmere Road, GyMEA Bay

**GIBSON**