



## 30/241 Kingsway Caringbah NSW

2 1 1

With its top floor position and sundrenched northerly aspect, this two bedroom apartment offers enormous scope to personalise the large free-flowing interiors with a creative makeover.

**View** : <https://www.gibsonpartners.com/sale/nsw/sutherland/caringbah/residential/apartment/5855185>

Located in a well-maintained security complex within walking distance to Caringbah shops, cafes, restaurants and transport this property presents the ideal first home or smart investment opportunity.

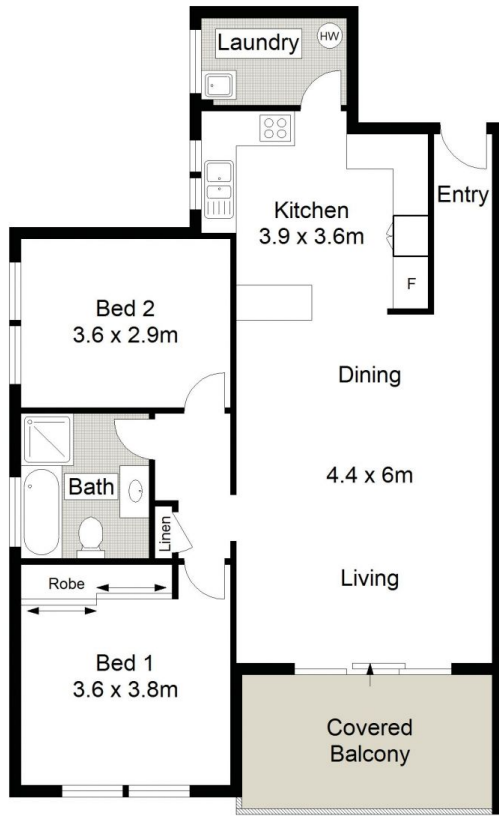
- Top floor position with a desirable sunny north aspect
- ? Spacious combined lounge & dining areas, high ceilings
- Large kitchen with breakfast bar & plentiful storage
- 2 bedrooms, main with BIR, neat bathroom & laundry
- Sunny entertaining balcony with private leafy outlook
- ? Lock-up garage, internal access, security intercom



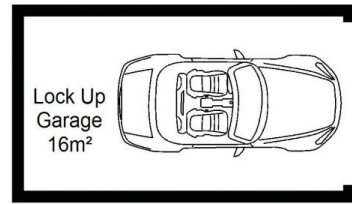
**Ivan Lampret**  
02 9523 1333



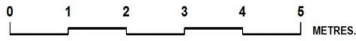
**Karla Madgwick**  
02 9523 1333



TOP FLOOR



BASEMENT



Gibson Partners Real Estate Pty Ltd

Scale in metres. Indicative only. Dimensions are approximate. All information contained herein is gathered from sources we believe to be reliable. However we cannot guarantee its accuracy and interested persons should rely on their own enquiries.



30/241 Kingsway, Caringbah

**GIBSON**