



4/60 Telopea Ave Caringbah South NSW

4 2 2

An exceptional contemporary design defines this as new 4 bedroom townhouse situated in the boutique development of only six. Constructed with premium finishes and inclusions throughout, this modern residence will appeal to new home buyers as well as those who are looking to downsize without compromising on space or style.

Surprisingly quiet, peaceful and private, this exceptional home is within easy access of Caringbah Shopping Village and Cronulla's beaches while being strolling distance to local shops, Caringbah Public School and Castelnau Park Reserve.

- Sleek contemporary open plan design flooded in natural light
- Deluxe Caesarstone kitchen equipped with Ilve gas

Price : \$ 1,150,000

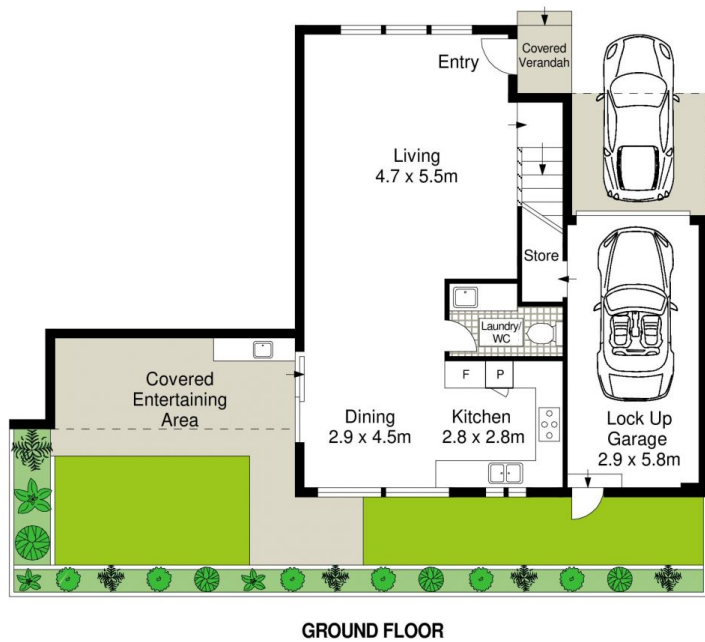
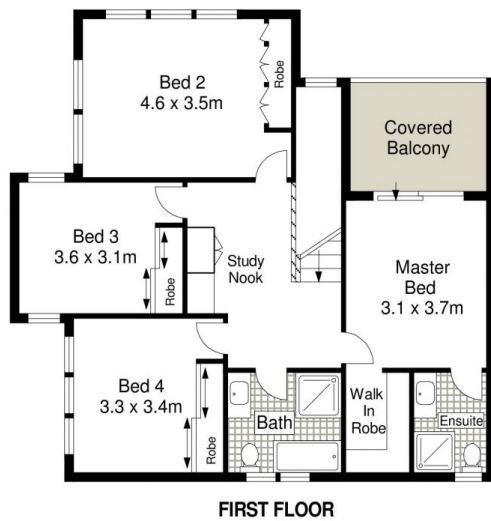
View : <https://www.gibsonpartners.com/sale/nsw/sutherland/caringbah-south/residential/townhouse/5855234>



Ivan Lampret
02 9523 1333



Karla Madgwick
02 9523 1333



0 1 2 3 4 5 METRES.

Gibson Partners Real Estate Pty Ltd

Scale in metres. Indicative only. Dimensions are approximate. All information contained herein is gathered from sources we believe to be reliable. However we cannot guarantee its accuracy and interested persons should rely on their own enquiries.



4/60 Telopea Avenue, Caringbah South

GIBSON