



## 12 Bellevue Parade Caringbah NSW

4 2 1

Beyond its picturesque façade, this charming family home flowing across a superb light-filled single level, boasting spacious and immaculate interiors has been thoughtfully designed for large family living.

With its sundrenched northerly aspect and sizeable 626sqm parcel of land the home delivers a tasteful neutral colour theme throughout and a selection of family living and entertaining areas. Located within minutes to local schools, shops and transport options.

- Formal lounge with fireplace, separate dining & family room
- Four bedrooms with BIR's, main with sun-filled cozy window seat
- Large timber kitchen with island bench & plenty of storage

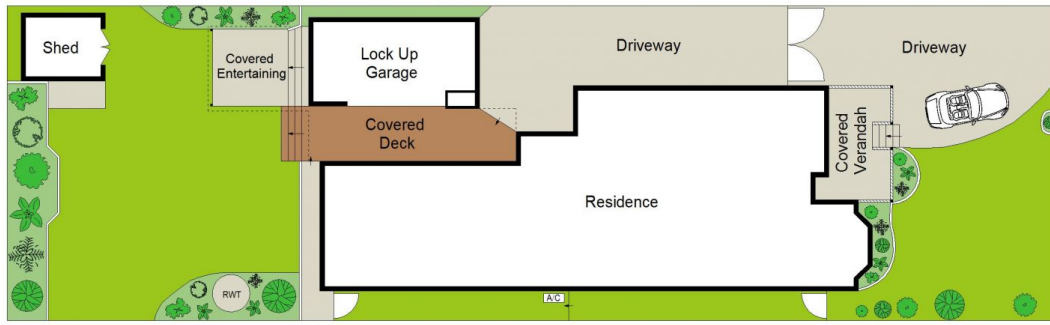
**Price** : \$ 1,439,999

**Land Size** : 626 sqm

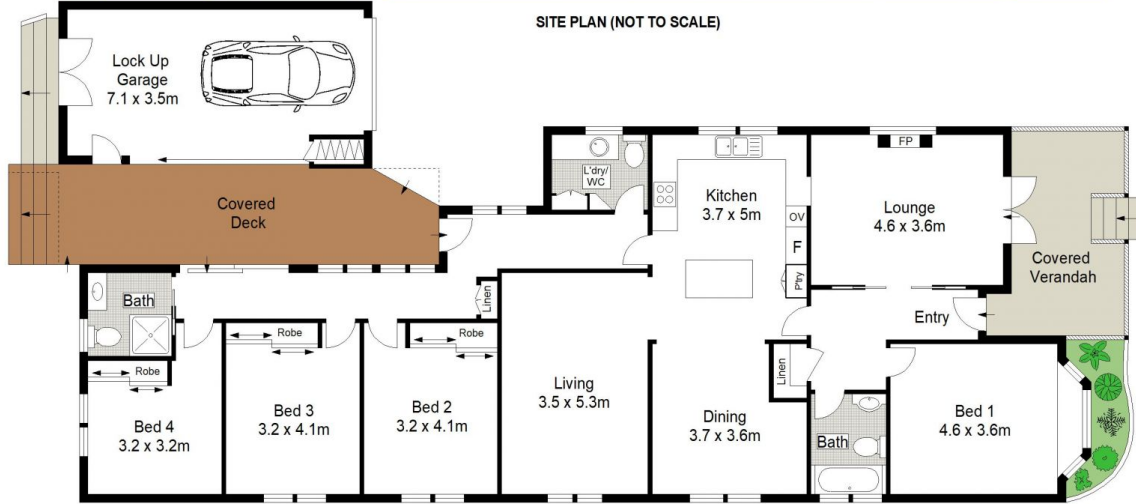
**View** : <https://www.gibsonpartners.com/sale/nsw/utherland/caringbah/residential/house/5855237>



**Chris Walsh**  
02 9523 1333



SITE PLAN (NOT TO SCALE)



0 1 2 3 4 5 METRES.

Gibson Partners Real Estate Pty Ltd

Scale in metres. Indicative only. Dimensions are approximate. All information contained herein is gathered from sources we believe to be reliable. However we cannot guarantee its accuracy and interested persons should rely on their own enquiries.



12 Bellevue Parade, Caringbah

**GIBSON**