



10/7-11 Richmount Street Cronulla NSW

3 2 2

This elegant top floor apartment located in the boutique AZURE development showcases the perfect fusion of clever design, luxury finishes and space to create private, opulent living areas both indoors and out. Stately high ceilings and extensive floor to ceiling glazing accentuate the northerly aspect and create open airy interiors that bathe in natural light.

Situated right in the heart of South Cronulla and just metres from Shelly beach and park, Nuns pool cafe and a short distance to Gunmatta Bay, Cronulla railway, mall, and cafe society; this stunning apartment embodies the relaxed sun and surf lifestyle that epitomises Cronulla.

- Top N/W corner position, floor to ceiling glazing, light & airy interiors

**Price** : \$ 1,800,000

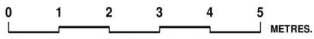
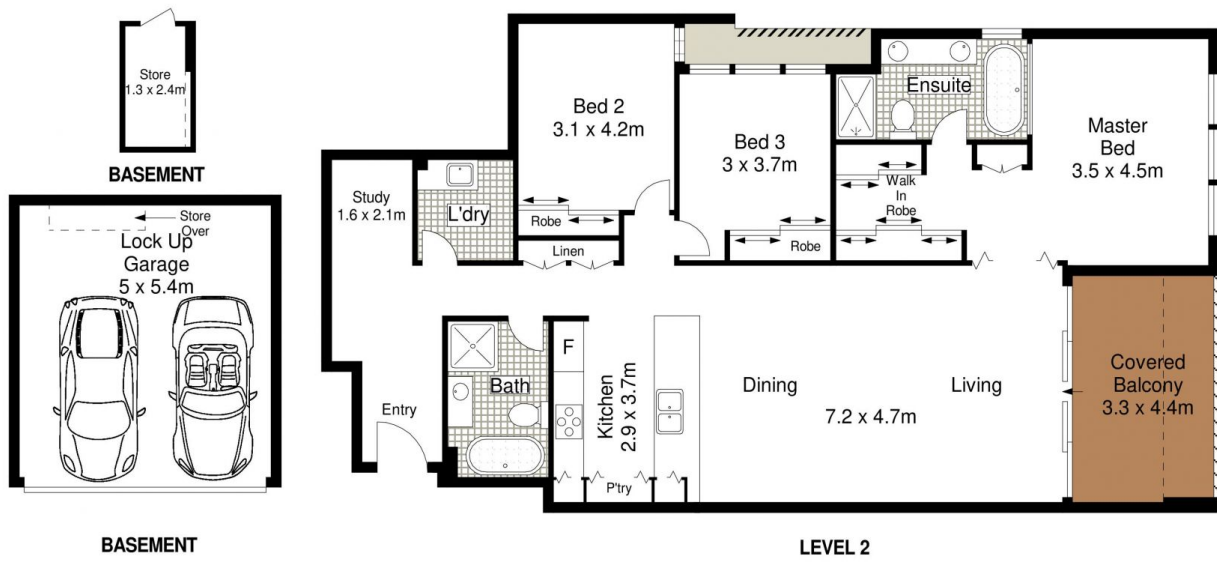
**View** : <https://www.gibsonpartners.com/sale/nsw/sutherland/cronulla/residential/apartment/5855239>



**Ivan Lampret**  
02 9523 1333



**Karla Madgwick**  
02 9523 1333



Gibson Partners Real Estate Pty Ltd

Scale in metres. Indicative only. Dimensions are approximate. All information contained herein is gathered from sources we believe to be reliable. However we cannot guarantee its accuracy and interested persons should rely on their own enquiries.



10/7-11 Richmount Street, Cronulla South

**GIBSON**