



## 12 Dodson Avenue Cronulla NSW

4 3 2

The first time offered in 50 years, this beautifully appointed waterfront home will captivate all those who enter. With sweeping uninterrupted water views over Gunnamatta Bay from the open-plan kitchen, dining and living area make for a breathtaking ever-changing backdrop to live by.

Having many timeless details throughout, this is an exciting opportunity to refurbish and create your own bay front dream home.

Situated in a private cul-de-sac location this home is the definition of easy living, with absolute level street access, main living all on one level in a family friendly tidal waterfront allowing for all ages to enjoy the tranquil waters of the bay.

**Price** : \$ 3,360,000

**Land Size** : 467.9 sqm

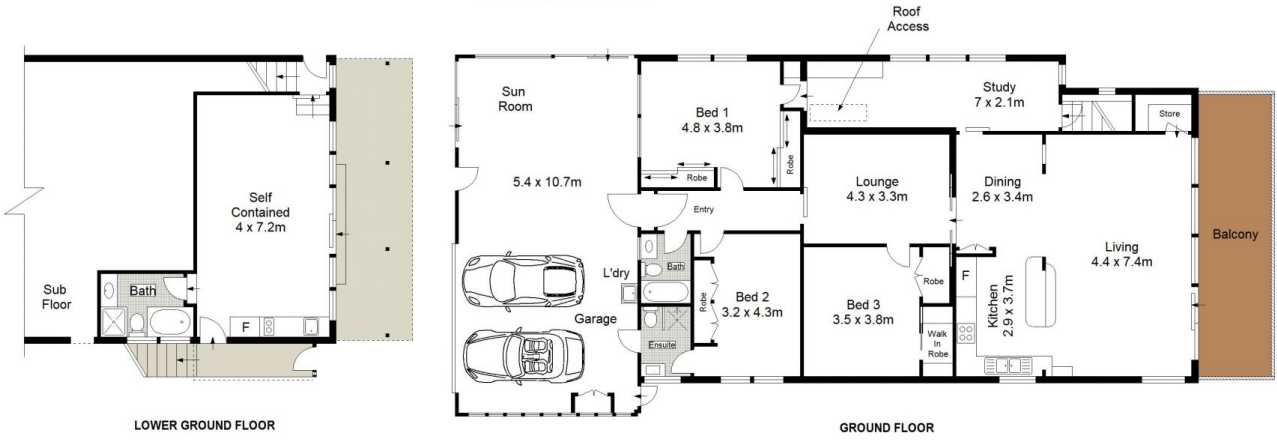
**View** : <https://www.gibsonpartners.com/sale/nsw/sutherland/cronulla/residential/house/5855249>



**Justin Buck**  
02 9523 1333



SITE PLAN (NOT TO SCALE)



0 1 2 3 4 5 METRES

Gibson Partners Real Estate Pty Ltd

Scale in metres. Indicative only. Dimensions are approximate. All information contained herein is gathered from sources we believe to be reliable. However we cannot guarantee its accuracy and interested persons should rely on their own enquiries.



12 Dodson Avenue, Cronulla

**GIBSON**