



## 213 Georges River Crescent Oyster Bay NSW

4 🛏 2 🚗 2 🚗

Located in a quiet enclave of Oyster Bay, this elevated family home offered after 38 years showcases wonderful views of the Georges River and surrounding bush landscape, set on an exceptional 803sqm corner block with a rare 3 street frontage.

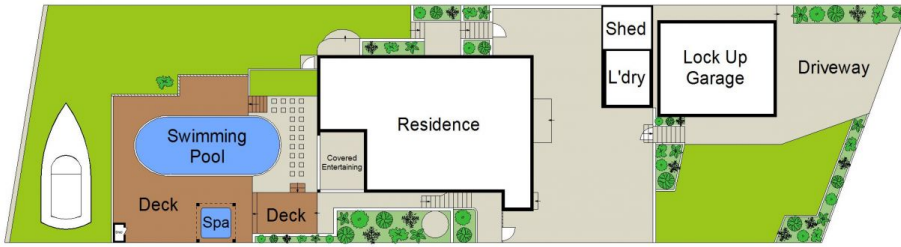
**View :** <https://www.gibsonpartners.com/sale/nsw/sutherland/oyster-bay/residential/house/5902585>

Consider the possibilities of further updates to the home enjoying the spacious interiors and entertaining space or capitalise on the gorgeous river views and rebuild your dream home. Within minutes to Oyster Bay Public school, shops, sporting fields, access to the river, parks, and convenient bus route.

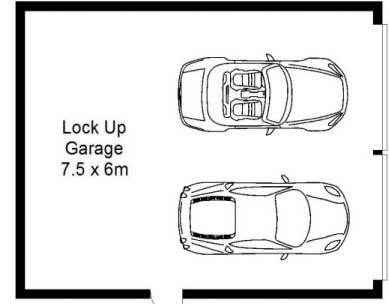


**Chris Walsh**  
02 9523 1333

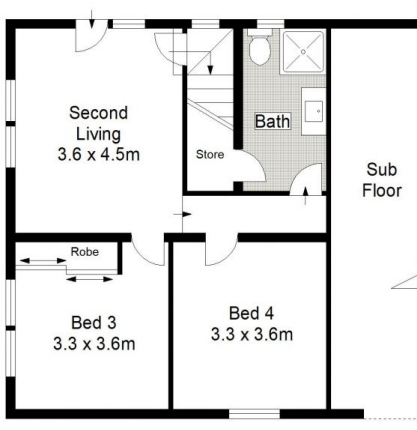
- Sunny living room with water views + separate dining room
- Four bedrooms, built-in wardrobes & two spacious



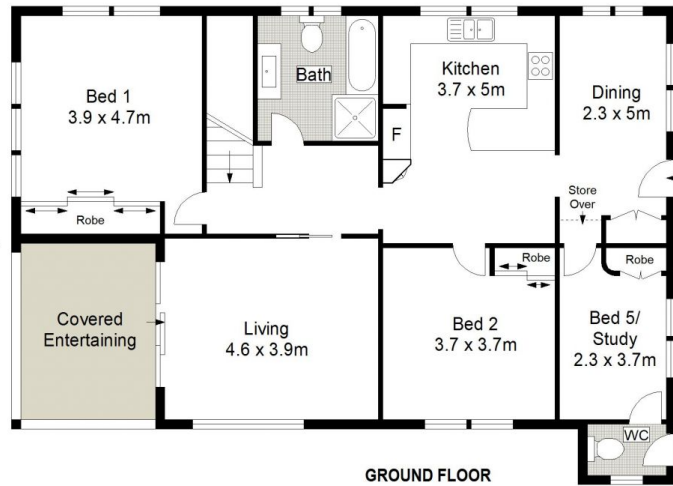
SITE PLAN (NOT TO SCALE)



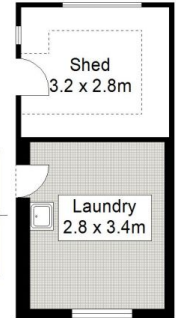
GROUND FLOOR



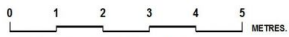
LOWER GROUND FLOOR



GROUND FLOOR



GROUND FLOOR



Gibson Partners Real Estate Pty Ltd

Scale in metres. Indicative only. Dimensions are approximate. All information contained herein is gathered from sources we believe to be reliable. However we cannot guarantee its accuracy and interested persons should rely on their own enquiries.



213 Georges River Crescent, Oyster Bay

**GIBSON**