



625/59-65 Gerrale Street Cronulla NSW

3 2 2

Presenting the perfect opportunity for buyers looking to embrace coastal living at its best with this three bedroom sub-penthouse apartment superbly located in the prestigious 'Peninsula' building with Cronulla beach just footsteps away.

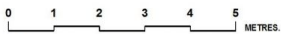
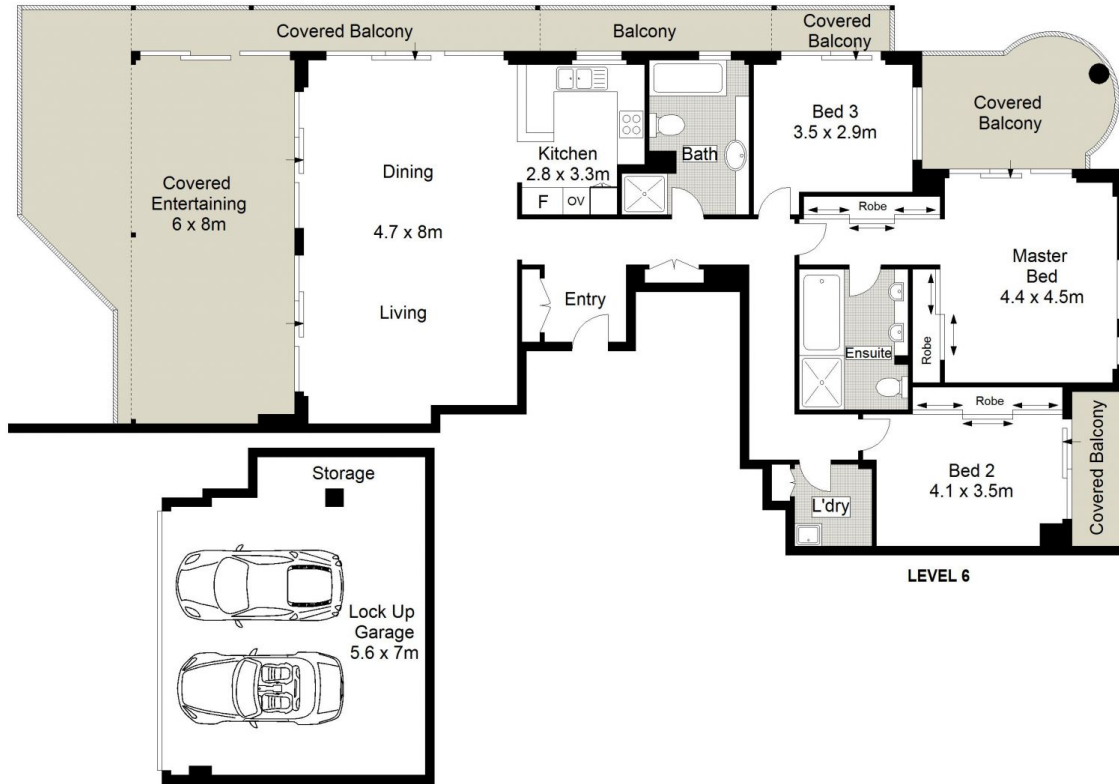
**View** : <https://www.gibsonpartners.com/sale/nsw/sutherland/cronulla/residential/apartment/5910272>

Boasting generously proportioned interiors and outstanding entertaining balcony that enjoys a sunny north east aspect and wonderful beach and park views. Immediate access to Cronulla Mall with shops, cafes, restaurants, and transport right at your door.



**Chris Walsh**  
02 9523 1333

- Spacious light-filled living & dining rooms flow to the outdoors
- Gourmet kitchen with granite tops & gas cook-top + internal laundry



Gibson Partners Real Estate Pty Ltd

Scale in metres, indicative only. Dimensions are approximate. All information contained herein is gathered from sources we believe to be reliable. However we cannot guarantee its accuracy and interested persons should rely on their own enquiries.



25/59 Gerrale Street, Cronulla

**GIBSON**