



1/117 Elouera Road Cronulla NSW

2 1 1

Positioned in a prime enviable location with easy access to Cronulla's Beaches, The Esplanade, cafes, restaurants and transport, this immaculate 2 bedroom apartment proposes an enviable beachside lifestyle of comfort and convenience.

Enjoying a desirable north facing balcony, modernised light-filled interiors and lock up garage, this apartment presents an excellent first home purchase or solid investment in an area of consistently strong rental demand.

- Convenient first floor position enjoying north facing balcony
- Open plan & light filled lounge/dining with dark floorboards
- Stone kitchen equipped with stainless steel appliances

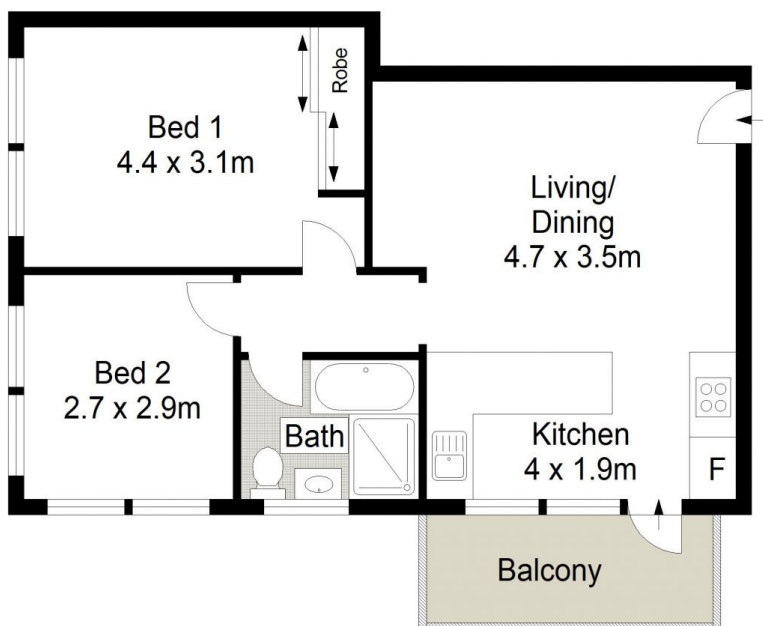
View : <https://www.gibsonpartners.com/sale/nsw/sutherland/cronulla/residential/apartment/6255975>



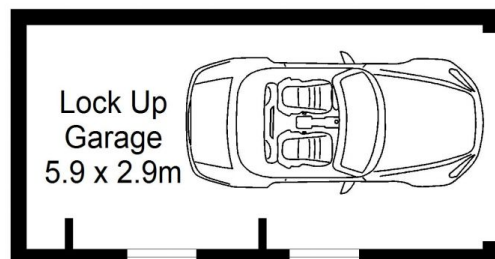
Ivan Lampret
02 9523 1333



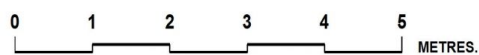
Karla Madgwick
02 9523 1333



ELEVATED GROUND FLOOR



GROUND FLOOR



Gibson Partners Real Estate Pty Ltd

Scale in metres. Indicative only. Dimensions are approximate. All information contained herein is gathered from sources we believe to be reliable. However we cannot guarantee its accuracy and interested persons should rely on their own enquiries.



1/117 Elouera Road, Cronulla

GIBSON