



## 491 Willarong Road Caringbah South NSW

6 3 3

Spanning two expansive levels and enjoying spectacular views of the Royal National Park and the tranquil waters of the Port Hacking, this wonderful home offers a unique floorplan with the capacity to cater for an array of family dynamics.

Situated on a large parcel of land in the highly sought-after Caringbah South peninsular, the home presents further potential to enhance the many attributes on offer, benefiting from the aspect and substantial views. Perfectly positioned within minutes to Caringbah Shopping Village, schools, transport and waterways.

- Combined formal living & dining room with split system A/C
- Sleek modern kitchen with s/s appliances & casual dining

**Land Size** : 638.6 sqm

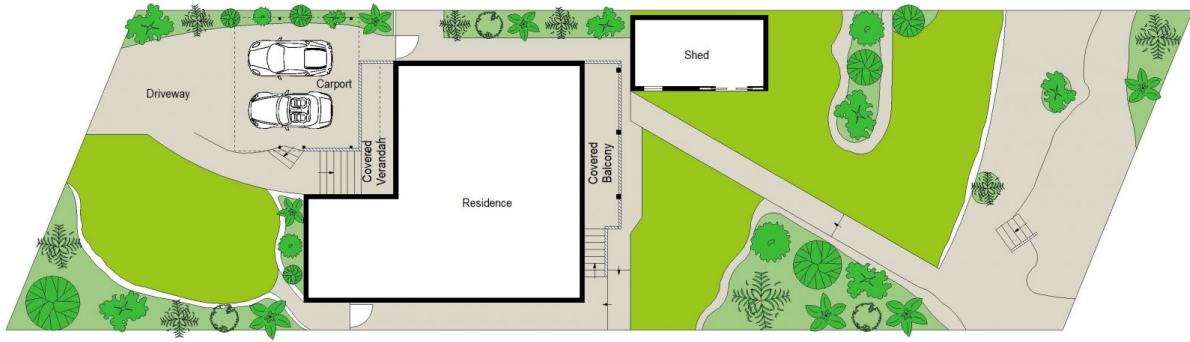
**View** : <https://www.gibsonpartners.com/sale/nsw/sutherland/caringbah-south/residential/house/6353589>



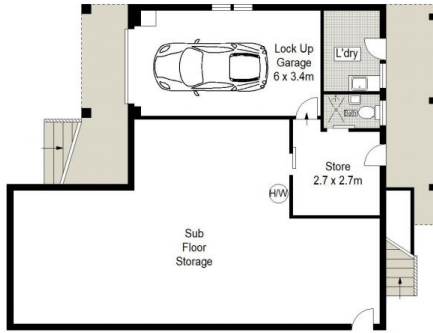
**Ivan Lampret**  
02 9523 1333



**Briolynn Kennedy**  
02 9523 1333



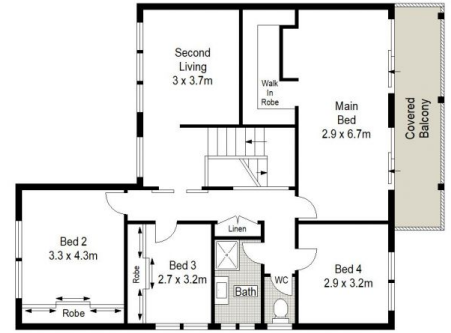
SITE PLAN (NOT TO SCALE)



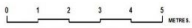
LOWER GROUND FLOOR



GROUND FLOOR



FIRST FLOOR



Gibson Partners Real Estate Pty Ltd

Scale in metres. Indicative only. Dimensions are approximate. All information contained herein is gathered from sources we believe to be reliable. However we cannot guarantee its accuracy and interested persons should rely on their own enquiries.



491 Willarong Road, Caringbah South

**GIBSON**